

"THE MATERIAL HEREIN IS FOR INFORMATION PURPOSES ONLY AND IS SUBJECT TO CHANGE WITHOUT NOTICE. DIGITAL EQUIPMENT CORPORATION ASSUMES NO RESPONSIBILITY FOR ANY ERRORS WHICH MAY APPEAR HEREIN."

FIELD MAINTENANCE PRINT SET

"THIS DRAWING AND SPECIFICATIONS, HEREIN, ARE THE PROPERTY OF DIGITAL EQUIPMENT CORPORATION AND SHALL NOT BE REPRODUCED OR COPIED OR USED IN WHOLE OR IN PART AS THE BASIS FOR THE MANUFACTURE OR SALE OF ITEMS WITHOUT WRITTEN PERMISSION. COPYRIGHT © 1980 DIGITAL EQUIPMENT CORPORATION."

TABLE OF CONTENTS

B-TC-TU58-E-1	TU58-E FIELD MAINTENANCE PRINTSET
E-UA-TU58-E-Ø	POWERED DUAL DRIVE ASSY
D-AD-7017567-0-0	TAPE DRIVE ASSEMBLY
K-PL-7017567-0-DBP	TAPE DRIVE ASSEMBLY
D-AD-7015510-0-0	CARTRIDGE DRIVE
E-UA-5413489-0-0	SERIAL TU58
D-CS-5413489-0-1	SERIAL TU58
K-PL-5413489-0-DBP	SERIAL TU58
B-PL-7016753-0-0	INSTALLATION ASSY
D-AD-7017372-0-0	POWER SUPPLY ASSY
A-SP-3700490-0-0	SHIPPING CONTAINER
D-IA-7016305-0-0	CABLE, I/O
D-IA-7016527-0-0	CABLE, POWER
B-DD-TU58-E	POWERED DUAL DRIVE ASSY
B-PL-TU58-E-2	TU58-E SHIPPING LIST
B-PL-7017372-0-0	POWER SUPPLY ASSY

**UNIT VARIATIONS
COVERED BY THIS
PRINT SET**

TU58-EX
TU58-EA

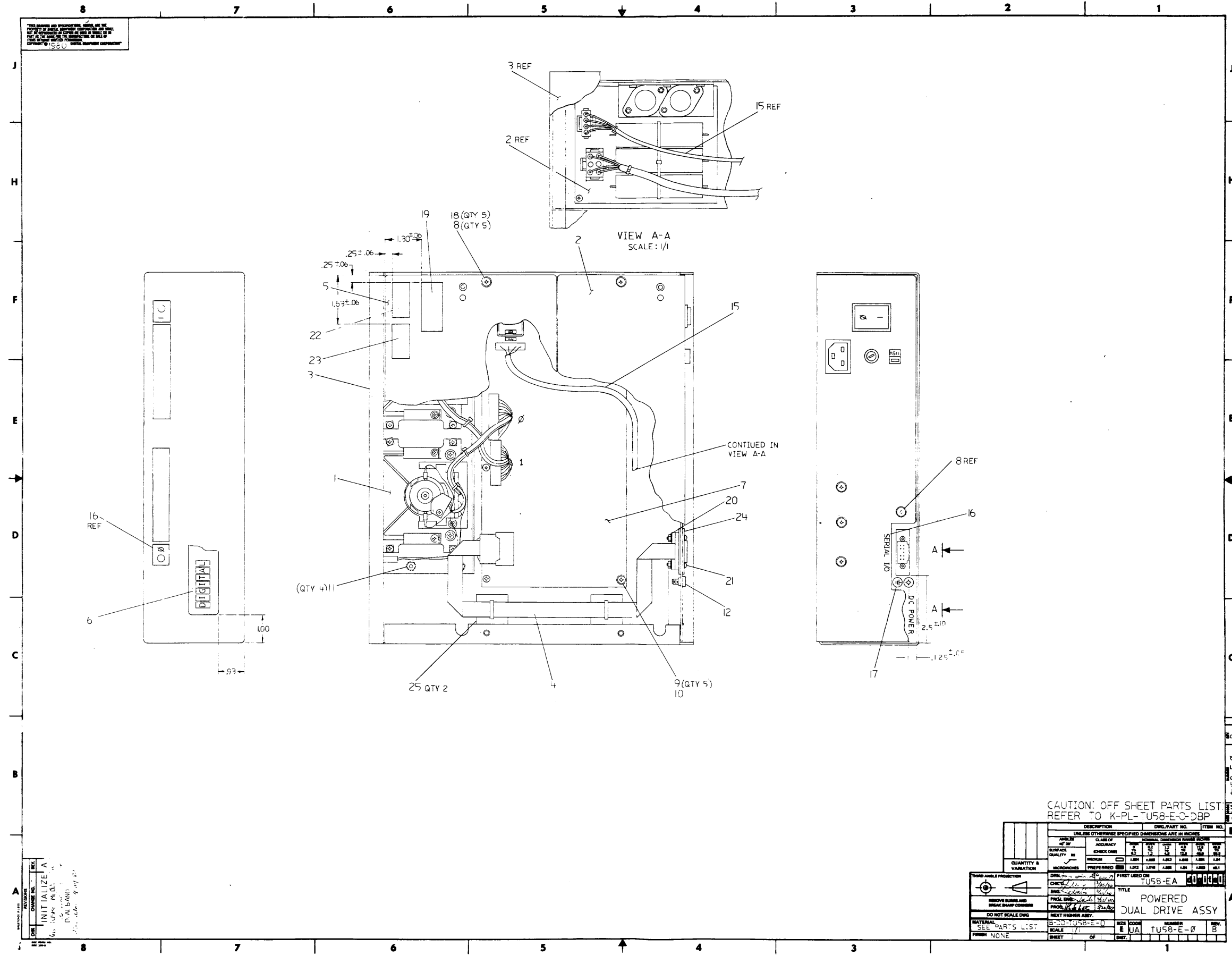
TU58-E
Field Maintenance
Print Set

Digital Equipment
Corporation
MF-Ø1Ø14-ØØ

REV. B
NUMBER TU58-E-1
SIZE B TC

REVISIONS	REV	B			USED ON OPTION/MODEL	DRN. James Secord	DATE 21 JAN 80	<div style="display: flex; justify-content: space-between; align-items: center;"> <div style="font-size: 0.9em;">TITLE: TU58-E FIELD MAINTENANCE PRINT SET</div> <div style="border: 1px solid black; padding: 2px; font-weight: bold; font-size: 0.8em;">digital</div> </div>					
	CHG. NO.	TU58E- ML001				CHK'D J.Walls	DATE 26 MAR 80						
	DATE	26/8/ 80				PROJ. ENG. J.Walls	DATE 26 MAR 80						
						FIELD SERV. J.Walls	DATE 26 MAR 80	SIZE B	CODE TC	NUMBER TU58-E-1	REV. B		
						SHEET 1 OF 1	DIST.						

THIS DRAWING AND INFORMATION HEREON ARE THE PROPERTY OF BUSH BROS. CORPORATION AND SHALL NOT BE REPRODUCED OR TRANSMITTED IN ANY FORM OR BY ANY MEANS, ELECTRONIC OR MECHANICAL, INCLUDING PHOTOCOPYING, RECORDING, OR BY ANY INFORMATION STORAGE AND RETRIEVAL SYSTEM, WITHOUT THE WRITTEN PERMISSION OF BUSH BROS. CORPORATION.



CAUTION: OFF SHEET PARTS LIST REFER TO K-PL-TU58-E-0-DBP

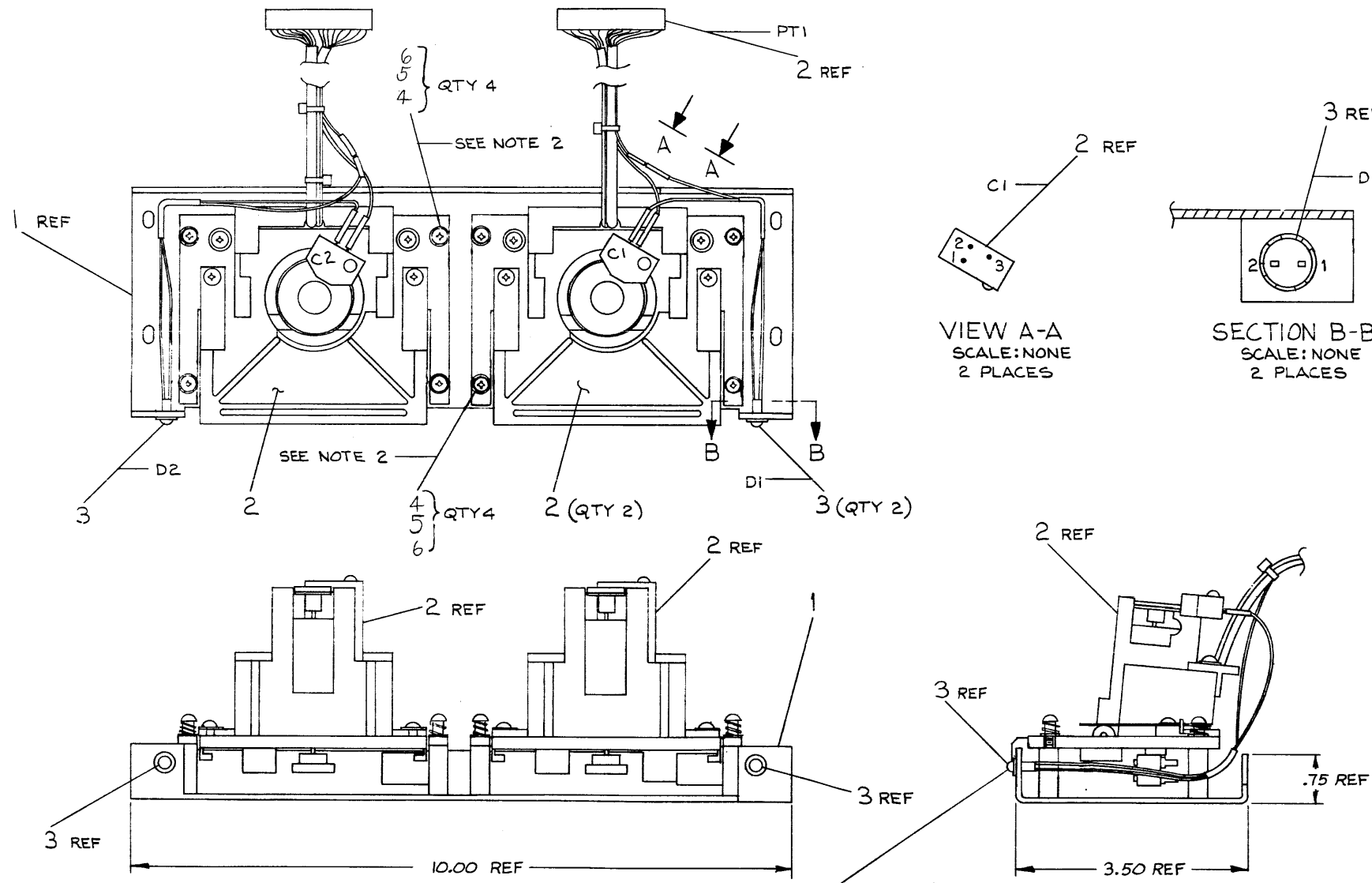
DESCRIPTION		QTY	PART NO.	ITEM NO.
UNLESS OTHERWISE SPECIFIED DIMENSIONS ARE IN INCHES				
APPROX	CLASS OF ACCURACY	TOLERANCE RANGES		
AS SURF	CHECK ONE	±.015	±.010	±.008
FINISH	CHECK ONE	±.005	±.003	±.002
QUANTITY & VARIATION	PREFERRED	±.002	±.001	±.001
THIRD ANGLE PROJECTION	DRW. BY	DATE	FIRST USED ON	TU58-EA
DESIGNED BY	PROJ. ENG.	DATE	TITLE	POWERED DUAL DRIVE ASSY
DO NOT SCALE DIMS	PRICE	DATE	SCALE	1/1
MATERIAL SEE PARTS LIST	SCALE	DATE	NUMBER	TU58-E-0
FINISH NONE	DRY	DATE	SHEET	1

INITIALIZE A
D. ALBANI
D. ALBANI

"THIS DRAWING AND SPECIFICATIONS, HEREIN, ARE THE PROPERTY OF DIGITAL EQUIPMENT CORPORATION AND SHALL NOT BE REPRODUCED OR COPIED OR USED IN WHOLE OR IN PART AS THE BASIS FOR THE MANUFACTURE OR SALE OF ITEMS WITHOUT WRITTEN PERMISSION. COPYRIGHT © 1980, DIGITAL EQUIPMENT CORPORATION"

WIRE TABLE							
ITEM NO	DESCRIPTION	FROM		TO		REMARKS	
		AVG	COLOR	CONNECTION	WITH		CONNECTION
3	26	BRN	D1-1	---	C1-2	---	SEE NOTE #1
			D1-2	---	PT1-8(BLK WIRE)	---	SEE NOTE #1
3	26	BRN	D2-1	---	C2-2	---	SEE NOTE #1
			D2-2	---	PT2-8(BLK WIRE)	---	SEE NOTE #1

- NOTES:
- DISCONNECT EXISTING BRN WIRE FROM C1-2 & C2-2
 - TORQUE VALUES ON DRIVES TO BE 5 IN./LBS. ON ITEM #6



CAUTION: OFF SHEET PARTS LIST EXISTS K-PL-7017567-0-DBP

QUANTITY & VARIATION	DESCRIPTION	DWG./PART NO.	ITEM NO.		
				UNLESS OTHERWISE SPECIFIED DIMENSIONS ARE IN INCHES	
<input checked="" type="checkbox"/> ANGLES 30° 30' <input checked="" type="checkbox"/> SURFACE QUALITY IN <input checked="" type="checkbox"/> MICRONS	<input checked="" type="checkbox"/> CLASS OF ACCURACY (CHECK ONE) MEDIUM <input type="checkbox"/> PREFERRED	NOMINAL DIMENSION RANGE INCHES			
		OVER 0 TO .25	OVER .25 TO 1.3	OVER 1.3 TO 4.0	OVER 4.0 TO 12.0
		±.004	±.008	±.012	±.018
		±.004	±.008	±.012	±.018
		±.004	±.008	±.012	±.018

THIRD ANGLE PROJECTION	DRN James Sigan (17 Nov 79)	FIRST USED ON	TU58-VX	digital
REMOVE BURRS AND BREAK SHARP CORNERS	CHK'D [Signature]	TITLE	TAPE DRIVE ASSEMBLY	
DO NOT SCALE DWG	ENG. [Signature]	MATERIAL	E-UA-TU58-VX-0	SIZE CODE NUMBER REV.
MATERIAL SEE PARTS LIST	PROJ. [Signature]	SCALE	NONE	D AD 7017567-0-0 A
FINISH NONE	PROD. [Signature]	SHEET	2	OF 1

REVISIONS
 CHANGE NO. REV.
 INITIALIZE A

LINE ITEM	DOCUMENT NUMBER	PART NUMBER	DESCRIPTION	QTY PER VARIATION 00	REFERENCE DESIGNATOR
1	1	D-IA-7423305-0-0	7423305-00	PLATE,TAPE DRIVE	1
2	2	D-AD-7015510-0-0	7015510-00	CARTRIDGE DRIVE	2
3	3	B-IA-7017543-0-0	7017543-00	L.E.D. ASSY.	2
4	4		7424101-00	WASHER	8
5	5		1217653-00	SPRING, COMPRESSION .234 OD X .3	8
6	6		7424084-00	SCREW, SHOULDER	8

REVISION HISTORY			BASIC PART NO: 7017567			D I G I T A L			
ENG	ECO NUMBER	REV	SECTION A OF A	DRN:	JAMES SICARD	DATE:	28-NOV-79	TITLE	PARTS LIST
---	INITIAL	A	SECTION, VARIATION INDEX	CHK'D:	GARY FLANDERS	DATE:	13-DEC-79	TAPE DRIVE ASSEMBLY	
			[A] 00	DES.ENG:	J. WALLS <i>J. Walls</i>	DATE:	21-JAN-80	DOCUMENT NUMBER	
			[B]	RESP.ENG.:	J. WALLS <i>J. Walls</i>	DATE:	07-JAN-80	SIZE	CODE
			[C]	MFG.ENG.:	JOHN LABATE <i>JL</i>	DATE:	26-MAR-80	K	PL
			[D]	ASSEMBLY NUMBER:	D-AD-7017567-0-0	TOP DOCUMENT NUMBER:	E-UA-TU58-VX-0	FILE NAME:	EDIT #
			[E]					21473A.PLS	2
			[F]						
			[G]						
			[H]						
			[I]						
			[J]						
			[K]						
			[L]						
			[M]						
			[N]						

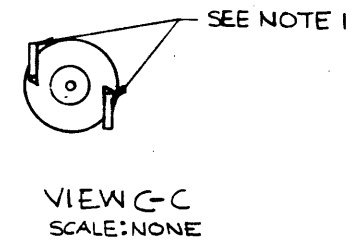
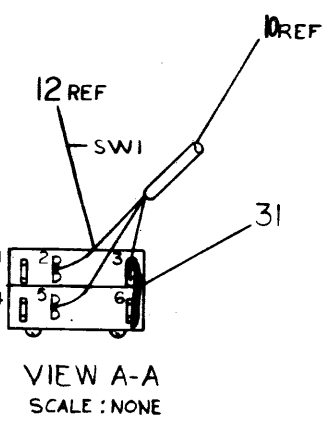
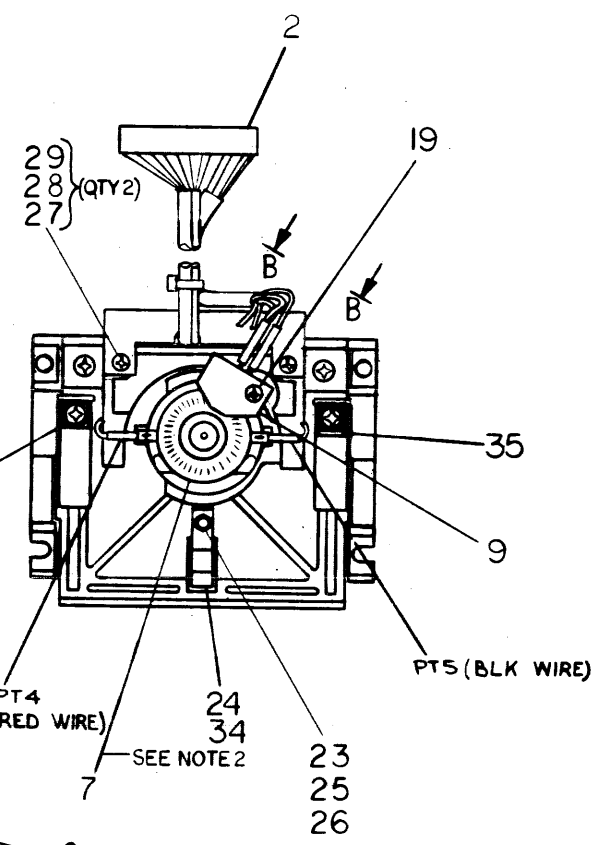
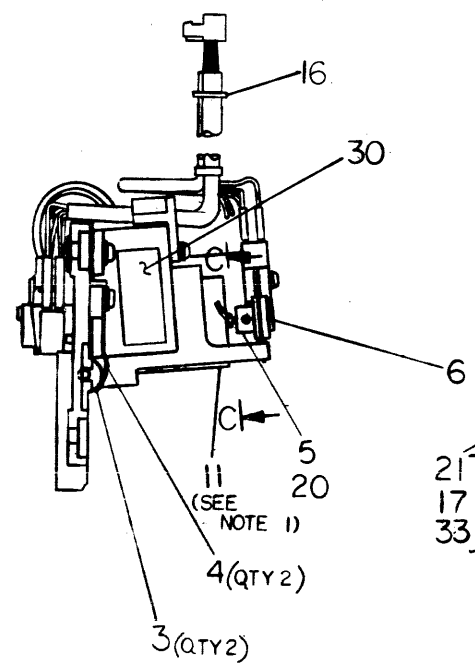
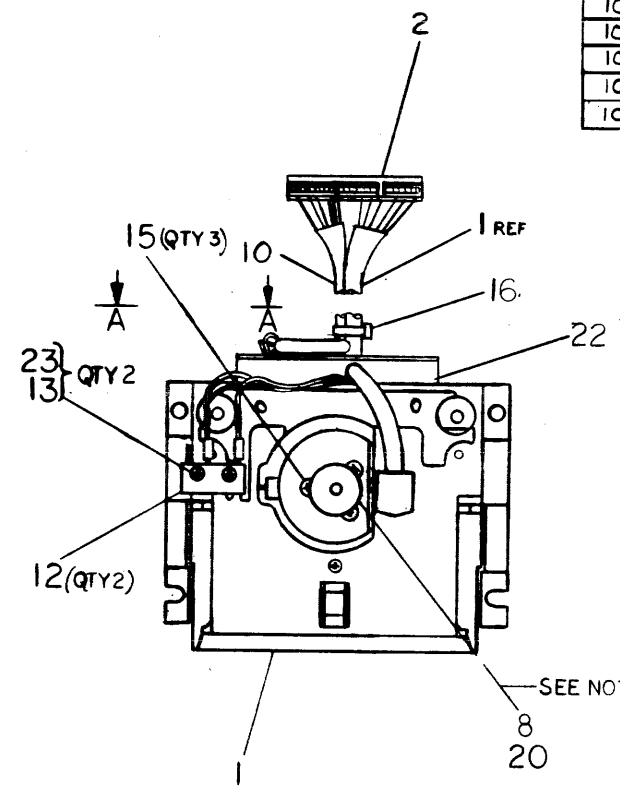
"THIS DRAWING AND SPECIFICATIONS HEREIN, ARE THE PROPERTY OF DIGITAL EQUIPMENT CORPORATION AND SHALL NOT BE REPRODUCED OR COPIED OR USED IN WHOLE OR IN PART AS THE BASIS FOR THE MANUFACTURE OR SALE OF ITEMS WITHOUT WRITTEN PERMISSION.

COPYRIGHT (C) 1980, DIGITAL EQUIPMENT CORPORATION "

WIRE TABLE							
ITEM NO	AWG	COLOR	CONN	WITH	CONN	WITH	REMARKS
10	24	YEL	PT-2	---	SWI-5	---	
10	24	GRY	PT-1	---	SWI-2	---	
10	24	VIO	PT-3	---	SWI-3	---	
31	22	---	SW-6	SOLD	SWI-3	SOLD	BUS WIRE
10	24	GRN	PT-6	---	CI-3	---	
10	24	BRN	PT-8	---	CI-2	---	
10	24	BLU	PT-7	---	CI-1	---	
10	24	BLK	PT-5	---	MOTOR-	---	
10	24	RED	PT-4	---	MOTOR+	---	TWISTED PAIR

- ASSEMBLE ITEM*5,6 & 9 USING $5 \pm .5$ IN LBS TORQUE.
- CARTRIDGE WITHDRAWAL FORCE SHALL BE A MAXIMUM OF 4.8 LBS. AND WHEN AN EXCESS FORCE OF 1 LB. IS APPLIED TO THE DRIVE ROLLER (OUTWARD) AND IS REMOVED, THE CARTRIDGE SHALL STILL BE AGAINST THE DRIVE REFERENCE STOPS.
- HEAD SKEW TO BE WITHIN $6' \pm 0'6''$ AFTER FINAL ASSY.

- NOTES:
- MOTOR TO BE ROTATED TO PROVIDE EASIEST ACCESS TO TERMINALS PT4, PT5. MOTOR LEADS MAY BE BENT AS SHOWN IF NECESSARY TO CLEAR MOTOR MOUNT.
 - CODE WHEEL ITEM #7 MUST ROTATE FREELY WITHOUT RUBBING IN SLOT IN OPTICAL SENSOR ITEM #9. TIGHTEN ITEM #20 TO $3.5 \pm .5$ IN LBS.
 - SET DRIVE ROLLER, ITEM #8, TO BE FLUSH WITH END OF MOTOR SHAFT ITEM #11. TIGHTEN ITEM #20 TO $3.5 \pm .5$ IN LBS.
 - TIGHTEN ITEMS 13 & 25 TO $2.0 \pm .5$ IN LBS.
 - TIGHTEN ITEMS 15, 17, 27 TO $3.5 \pm .5$ IN LBS.
 - TIGHTEN ITEM 21 TO $5 \pm .5$ IN LBS. WHEN CARTRIDGE IS INSERTED INTO DRIVE, THE FORCE ON THE DRIVE ROLLER (ITEM 8) IS TO BE $1 \text{ LB} \pm .1$.

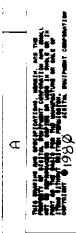


VIEW B-B SCALE: NONE

CAUTION: OFF SHEET PARTS LIST K-PL-7015510-0-DBP

7015510-M-001 A	D. WARREN	12/17/72
7015510-M-002 B	D. WARREN	12/17/72
7015510-M-003 C	D. WARREN	12/17/72
7015510-M-004 D	D. WARREN	12/17/72
7015510-M-005 E	D. WARREN	12/17/72

DESCRIPTION	QTY	UNIT	CLASS	DATE
QUANTITY & VARIATION				
REVISIONS				
REVISION 1				
REVISION 2				
REVISION 3				
REVISION 4				
REVISION 5				
REVISION 6				
REVISION 7				
REVISION 8				
REVISION 9				
REVISION 10				
REVISION 11				
REVISION 12				
REVISION 13				
REVISION 14				
REVISION 15				
REVISION 16				
REVISION 17				
REVISION 18				
REVISION 19				
REVISION 20				
REVISION 21				
REVISION 22				
REVISION 23				
REVISION 24				
REVISION 25				
REVISION 26				
REVISION 27				
REVISION 28				
REVISION 29				
REVISION 30				
REVISION 31				
REVISION 32				
REVISION 33				
REVISION 34				
REVISION 35				
REVISION 36				
REVISION 37				
REVISION 38				
REVISION 39				
REVISION 40				
REVISION 41				
REVISION 42				
REVISION 43				
REVISION 44				
REVISION 45				
REVISION 46				
REVISION 47				
REVISION 48				
REVISION 49				
REVISION 50				
REVISION 51				
REVISION 52				
REVISION 53				
REVISION 54				
REVISION 55				
REVISION 56				
REVISION 57				
REVISION 58				
REVISION 59				
REVISION 60				
REVISION 61				
REVISION 62				
REVISION 63				
REVISION 64				
REVISION 65				
REVISION 66				
REVISION 67				
REVISION 68				
REVISION 69				
REVISION 70				
REVISION 71				
REVISION 72				
REVISION 73				
REVISION 74				
REVISION 75				
REVISION 76				
REVISION 77				
REVISION 78				
REVISION 79				
REVISION 80				
REVISION 81				
REVISION 82				
REVISION 83				
REVISION 84				
REVISION 85				
REVISION 86				
REVISION 87				
REVISION 88				
REVISION 89				
REVISION 90				
REVISION 91				
REVISION 92				
REVISION 93				
REVISION 94				
REVISION 95				
REVISION 96				
REVISION 97				
REVISION 98				
REVISION 99				
REVISION 100				



NOTES:

1. ALL DIMENSIONS UNLESS NOTICED OTHERWISE ARE IN MILLIMETERS.
2. DIMENSIONS ABOVE BOARD SURFACES ARE IN MILLIMETERS.
3. DIMENSIONS BELOW BOARD SURFACES ARE IN MILLIMETERS.
4. DIMENSIONS IN PARENTHESES ARE OPTIONAL - DO NOT INSTALL.

STEP 1: 1. Y AXIS 2. STEP 2: DIMS 3. STEP 3: DIMS 4. STEP 4: DIMS 5. STEP 5: DIMS 6. STEP 6: DIMS 7. STEP 7: DIMS 8. STEP 8: DIMS 9. STEP 9: DIMS 10. STEP 10: DIMS

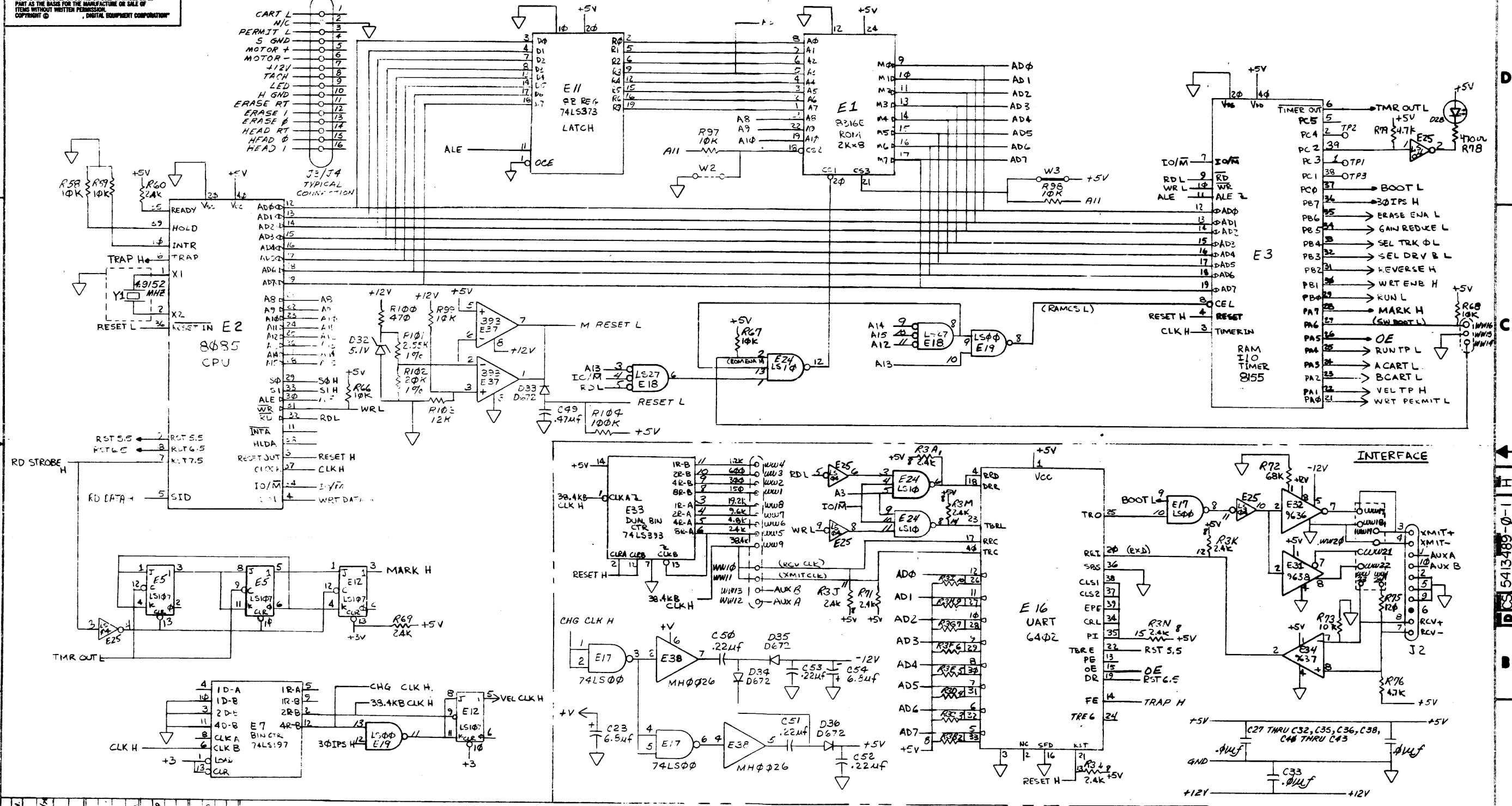
REVISIONS

NO.	DATE	DESCRIPTION
1	10/10/88	ISSUED FOR FAB
2	10/10/88	REVISED FOR BOARD SURFACES
3	10/10/88	REVISED FOR BOARD SURFACES
4	10/10/88	REVISED FOR BOARD SURFACES
5	10/10/88	REVISED FOR BOARD SURFACES
6	10/10/88	REVISED FOR BOARD SURFACES
7	10/10/88	REVISED FOR BOARD SURFACES
8	10/10/88	REVISED FOR BOARD SURFACES
9	10/10/88	REVISED FOR BOARD SURFACES
10	10/10/88	REVISED FOR BOARD SURFACES

STAMP

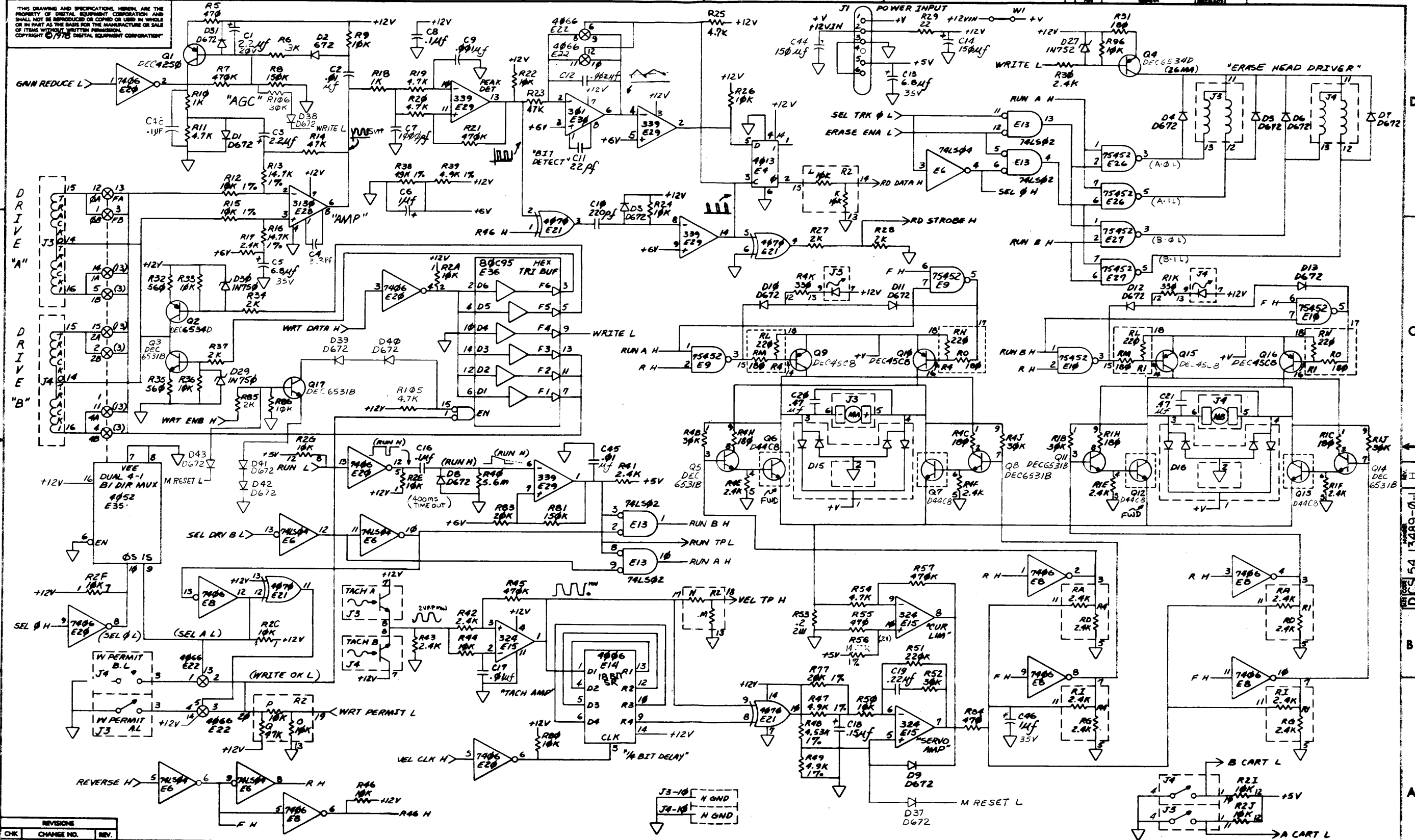
DATE	10/10/88
DRN. ID. POWERS	10/10/88
TECH. ENG. [Signature]	10/10/88
PROJ. ENG. [Signature]	10/10/88
SCALE	1:1
SIZE	54131099
TITLE	digital
SERIAL	TU58
ETCH REV. F-PI	

THIS DRAWING AND SPECIFICATIONS, HEREIN, ARE THE PROPERTY OF DIGITAL EQUIPMENT CORPORATION AND SHALL NOT BE REPRODUCED OR COPIED OR USED IN WHOLE OR IN PART AS THE BASIS FOR THE MANUFACTURE OR SALE OF ITEMS WITHOUT WRITTEN PERMISSION. DIGITAL EQUIPMENT CORPORATION. COPYRIGHT ©



REV.	CHG.	NO.	DATE	BY	CHKD.
1					
2					
3					
4					
5					
6					
7					
8					

DRN. M. LEIS	5/11/78	FIRST USED ON	TU58
CHK'D. M. LEIS	9/20/78	TITLE	TU58 ELECTRONICS
ENG. ROSE/LEIS	7/6/78	PROJ. ENG. IN CH.	BL/78
PROD. PL/78	8-1-78	SERIAL	
NEXT HIGHER ASSY.		SIZE CODE	D
B-32-5413489-0		NUMBER	CS 5413489-0-1
SCALE		DIST.	H
SHEET 1 OF 2			



REV.	CHG.	NO.	DATE

TITLE	TU58 ELECTRONICS:	SIZE CODE	DCS	NUMBER	54 13489-0-1	REV.	H
SERIAL							
SCALE	1/1	SHEET	2 OF 2	DIST.			

LINE	ITEM	DOCUMENT NUMBER	PART NUMBER	DESCRIPTION	QTY PER VARIATION	REFERENCE DESIGNATOR
					00	
1	1		5013488-00	TU58 ELECTRONIC SERIAL	1	
2	2		1215816-00	HEADER.100 15POS STRAIGHT	2	J3,J4
3	3		1000021-00	220.0 MMF 100V 5%200PPM MICA	1	C10
4	4		1000023-00	*** THIS ITEM IS NOT USED ***	-	
5	5		1010978-36	.1 MFD 50V 10% CER	3	C8,C16,C47
6	6		1000042-00	1000.0 MMF 100V 5%200PPM MICA	2	C9,C7
7	7		1001610-00	.01 MFD 50V +80-20% 25U CER	17	C2,C17,C27-C33,C35,C36,C38,C40,
						CONT C41,C42,C43,C45
8	8		1001776-00	1 MFD 35V 10% S.TANT	2	C6,C46
9	9		1002315-00	2000.0 MMF 500V 5%200PPM MICA	1	C12
10	10		1013466-21	3.3 MMF 50V+- .5PF CER	1	C4
11	11		1002431-00	2.2MFD 35V 10% S.TANT	2	C1,C3
12	12		1005306-00	6.8MFD 35V 10% S.TANT	4	C5,C13,C23,C54
13	13		1005334-00	*** THIS ITEM IS NOT USED ***	-	
14	14		1005820-00	22.0 MMF 100V 5%200PPM MICA	1	C11
15	15		1010978-40	.22 MFD 50V 10% CER	1	C19
16	16		1011895-00	.15 MFD 35V 10% S.TANT	1	C18
17	17		1012312-00	*** THIS ITEM IS NOT USED ***	-	
18	18		1100101-00	*** THIS ITEM IS NOT USED ***	-	
19	19		1102808-00	1N 752A VZ= 5.6 5% .40W	1	D27
20	20		1105275-00	D 672 TR= 15NS PIV= 60V SI	25	D1-D13,D31,D33-D43
21	21		1110324-00	LED 1MCD@10MA PIV=3	1	D28
22	22		1115369-00	VM 18 PIV=100 I=1A	2	D15,D16
23	23		1213506-04	HEADER 10POS RT ANGLE W/3 SI	1	J2
24	24		1212385-04	SOCKET 24PIN IC	1	XE1
25	25	USED FOR Q7 & Q12	1213071-06	INSULATOR,RUBBER SILICONE	2	
26	26		1213113-01	*** THIS ITEM IS NOT USED ***	-	
27	27		1213418-01	HEAT SINK,VERTICLE MNT,ALUMINUM	2	
28	28		1300247-00	120.0 .25 W 5.0 % CC	1	R75
29	29		1300274-00	*** THIS ITEM IS NOT USED ***	-	

REVISION HISTORY		BASIC PART NO: 5413489		DRN: DAN MUTNANSKY		DATE: 22-MAY-78		DIGITAL	
ENG	ECO NUMBER	REV	SECTION A OF A	CHK'D:		DATE:		TITLE	PARTS LIST
---	INIT	C	SECTION VARIATION INDEX	CHK'D:	P. BOSSMAN	DATE:	6-JUNE-78	SERIAL	TU58
IPB	5413489-ML001	D	[A] 00						
IM.L	5413489-ML003	E	[B]						
IML	5413489-ML004	F	[C]	DES.ENG:	MIKE LEIS	DATE:	22-MAY-78		
ID.M	5413489-ML006	H	[D]						
			[E]						
			[F]	RESP.ENG.:	M. LEIS	DATE:	6-JUNE-78		DOCUMENT NUMBER
			[G]						
			[H]					SIZE	CODE
			[I]					NUMBER	REV
			[J]	MFG.ENG.:	P. BARTON	DATE:	6-JUNE-78	K	PL
			[K]					5413489-0-DBP	H
			[L]						
			[M]	ASSEMBLY NUMBER:		TOP DOCUMENT NUMBER:		FILE NAME:	EDIT #
			[N]	E-UA-5413489-0-0		TU58		Z0582H.PLS	37

"THIS DRAWING AND SPECIFICATIONS HEREIN, ARE THE PROPERTY OF DIGITAL EQUIPMENT CORPORATION AND SHALL NOT BE REPRODUCED OR COPIED OR USED IN WHOLE OR IN PART AS THE BASIS FOR THE MANUFACTURE OR SALE OF ITEMS WITHOUT WRITTEN PERMISSION. COPYRIGHT (C) 1980, DIGITAL EQUIPMENT CORPORATION"

LINE ITEM	DOCUMENT NUMBER	PART NUMBER	DESCRIPTION	QTY PER VARIATION 00	REFERENCE DESIGNATOR
30	30	1300316-00	470.0 .25 W 5.0 % CC	5	R5,R55,R100,R78,R84
31	31	1300365-00	1.0 K .25 W 5.0 % CC	2	R10,R18
32	32	1300295-00	*** THIS ITEM IS NOT USED ***	-	
33	33	1300447-00	4.70 K .25 W 5.0 % CC	8	R11,R19,R20,R25,R54,R79,R76,R105
34	34	1300479-00	10.0 K .25 W 5.0 % CC	21	R9,R22,R24,R26,R44,R46,R50,R58, CONT R59,R66,R67,R68,R80,R33,R36,R96, CONT R86,R73,R97-R99
35	35	1301322-00	180.0 .25 W 5.0 % CC	1	R31
36	36	1301327-00	68.0 K .25 W 5.0 % CC	1	R72
37	37	1300432-00	3.0 K .25 W 5.0 % CC	1	R6
38	38	1301969-00	22.0 .25 W 5.0 % CC	1	R29
39	39	1302092-00	220.0 K .25 W 5.0 % CC	1	R51
40	40	1302177-00	47.0 K .25 W 5.0 % CC	2	R14,R23
41	41	1302388-00	2.0 K .25 W 5.0 % CC	5	R27,R28,R34,R37,R85
42	42	1302391-00	20.0 K .25 W 5.0 % CC	1	R83
43	43	1302394-00	30.0 K .25 W 5.0 % CC	2	R52,R106
44	44	1302396-00	150.0 K .25 W 5.0 % CC	2	R8,R91
45	45	1302398-00	470.0 K .25 W 5.0 % CC	4	R7,R21,R45,R57
46	46	1302941-00	14.70 K .25 W 1.0 % RN55D-F10	3	R13,R16,R56
47	47	1303177-00	2.40 K .25 W 5.0 % CC	8	R17,R30,R41,R42,R43,R60,R69,R71
48	48	1303312-00	10.0 K .25 W 1.0 % RN55D-F10	2	R12,R15
49	49	1305324-00	4.99 K .25 W 1.0 % RN55D-F10	4	R38,R39,R47,R49
50	50	1309386-00	5.60 M .25 W 5.0 % CC	1	R40
51	51	1311466-00	*** THIS ITEM IS NOT USED ***	-	
52	52	1311466-00	.20 2.0 W 5.0 % WW	1	R53
53	53	1313596-00	20.0 K .25 W 1.0 % RN55D-F10	2	R77,R102
54	54	1315660-00	R NETWORK 16-10K 1-4.7K 20PIN	1	R2
55	55	1315661-00	R NETWORK MULTI-VALUE	2	R1,R4
56	56	1315662-00	R NETWORK 14-2.4K 10.0 % 15PIN	1	R3
57	57	1503409-00	DEC6534D PNP 310MW SI 40 90	2	Q2,Q4
58	58	1509142-00	DEC4250 PNP 200MW SI 40250	1	Q1
59	59	1509338-00	DEC6531B NPN 310MW SI 40 90 P	6	Q3,Q5,Q8,Q11,Q14,Q17
60	60	1510421-00	D 4408 NPN 30WT SI 60 20	4	Q6,Q7,Q12,Q13
61	61	1510598-00	DEC4508 PNP 27WT SI 60 20 Y	4	Q9,Q10,Q15,Q16
62	62	1812396-06	XTAL 4.9152 MHZ	1	Y1
63	63	1910282-00	301AN OP AMP	1	E30
64	64	1910645-00	75452 DRIVER,PERIPH,DUAL,	4	E9,E10,E26,E27
65	65	1910741-00	7406 INVERTER GATE-HEX 11	1	E8
66	66	1911242-00	*** THIS ITEM IS NOT USED ***	-	
67	67	1912107-00	324 OP AMP,QUAD	1	E15
68	68	1912108-00	339 VOLT CMPRTR,QUAD	1	E29
69	69	1912799-00	LS00 NAND-GATE-QUAD 2IN,F	2	E17,E19
70	70	1912801-00	LS02 NOR-GATE-QUAD 2IN	1	E13
71	71	1912803-00	774LS04 INVERTER GATE, HEX	2	E6,E25
72	72	1912807-00	LS10 NAND GATE-TRIPLE 3IN	1	E24
73	73	1912813-00	LS27 NOR GATE-TRIPLE 3IN	1	E18
74	74	1912832-00	LS107 FF-JK DUAL MASTER/SL	2	E5,E12
75	75	1912857-00	LS197 COUNTER,BINARY,PRESET	1	E7

! D ! I ! G ! I ! T ! A ! L !	! TITLE	! SERIAL TU58	! SECTION A OF A	! !SIZE!CODE! DOCUMENT NUMBER !	! REV !
! ! ! ! ! ! ! ! ! !				! K ! FL ! 5413489-0-000	! H !

LINE ITEM	DOCUMENT NUMBER	PART NUMBER	DESCRIPTION	QTY PER VARIATION 00	REFERENCE DESIGNATOR	
76	76	1914451-00	74LS393 COUNTER,BINARY,4BIT	1	E33	
77	77	1914466-00	3130E OP AMP MOS/FET IN,CM	1	E28	
78	78	1915219-00	LS373 FF-D OCTAL-TRANSPARE	1	E11	
79	79	1915415-00	9636 DRIVER,DUAL,EIA RS-	1	E32	
80	80	1915416-00	9637 RECEIVER,DUAL,RS-42	1	E34	
81	81	1915417-00	9638 DRIVER,DUAL,EIA RS-	1	E31	
82	82	2113605-00	4006B SHIFT REG,18 STAGE	1	E14	
83	83	2113609-00	4013B FF-D DUAL W/SET/RESE	1	E4	
84	84	2113630-00	4052B MULTIPLEXER 4CHAN DI	1	E35	
85	85	2113632-00	4066B BILATERAL SWITCH-QUA	1	E22	
86	86	2113634-00	4070B X-OR GATE-QUAD CMOS	1	E21	
87	87	2113937-00	UART 125K BUAD	1	E16	
88	88	2114663-00	MM 80C95 BUFFER-GATE-HEX TRIS	1	E36	
89	89	2114963-00	UP,8-BIT NMOS	1	E2	
90	90	2114964-00	RAM 2048 MOSJ-STATIC	1	E3	
91	91	23089E2-00	E2-01	1	E1	
92	92	1212619-07	HEADER.156 6POS STRAIGHT	1	J1	
93	93	9009185-00	JUMPER, WIRE, INSULATED, BLACK B	2	W1,W3	
94	94	USED FOR Q7 & Q12	9010057-00	WASHER, INSULATING SHOULDER FOR	2	
95	95		1215816-01	HEADER.100 3POS STRAIGHT	1	
96	96		1215816-02	HEADER.100 13POS STRAIGHT	1	
97	97		1215816-03	HEADER.100 8POS STRAIGHT	1	
98	98		9006011-01	SCREW,PAN,PHIL 4-40X 3/8 SS	2	
99	99		9006557-00	NUT,KEP , 4-40X 1/4 AF	2	
100	100		1100124-00	1N 750A VZ= 4.7 5% .40W P	2	D29,D30
101	101		1301890-00	560.0 .25 W 5.0 % CC	2	R32,R35
102	102		1313840-00	4.53 K .25 W 1.0 % RN55D-F10	1	R48
103	103		9105740-55	WIRE(WRAP)30AWG UL1423	A/R	
104	104		1012084-03	150 MFD 15V +75-10% AL EL	2	C44,C14
105	105		9107256-11	*** THIS ITEM IS NOT USED ***	-	
106	106		1910741-01	7406N BUFFER,HEX	1	E20
107	107		5414232-00	*** THIS ITEM IS NOT USED ***	-	
108	108		1310633-00	2.55 K .25 W 1.0 % RN55D-F10	1	R101
109	109		1300488-00	12.0 K .25 W 5.0 % CC	1	R103
110	110		1302466-00	100.0 K .25 W 5.0 % CC	1	R104
111	111		1105871-00	1/4M5.1AZ1 = 5.1 1% .25W N	1	D32
112	112		1914156-00	LM 393 VOLT.COMPARATOR DUAL	1	E37
113	113		1912098-00	0026 DRIVER,MOS CLOCK,2	1	E38
114	114		1010274-01	.22 MFD 50V +80-20% Z5U CER	4	C50-C53
115	115		1010279-00	.47 MFD 25V 20% CER	3	C20,C21,C49

D	I	G	I	T	A	L	TITLE	SERIAL TUS8	SECTION A OF A	SIZE	CODE	DOCUMENT NUMBER	REV
										K	PL	5413489-0-00P	H

DIGITAL EQUIPMENT CORPORATION			QUANTITY / VARIATION										NOTES:
PARTS LIST													
MADE BY <i>P. B. FERRERIN</i>	CHECKED <i>P. B. Ferrerin</i>	SECTION											
DATE <i>12 APR 79</i>	DATE <i>12 APR 79</i>												
ENG <i>D. Moore</i>	PROD <i>D. Moore</i>	ISSUED SECTION											
DATE <i>12 APR 79</i>	DATE <i>12 APR 79</i>												

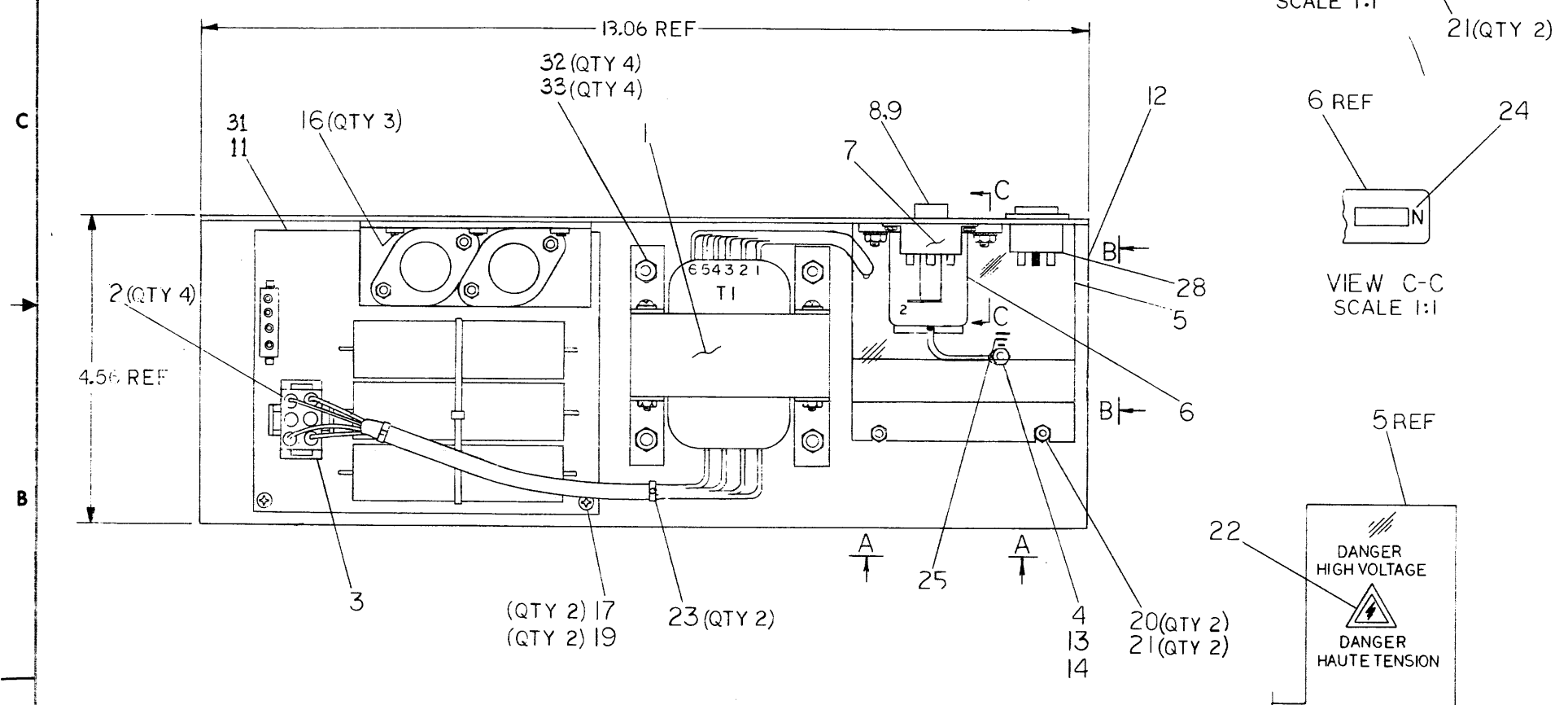
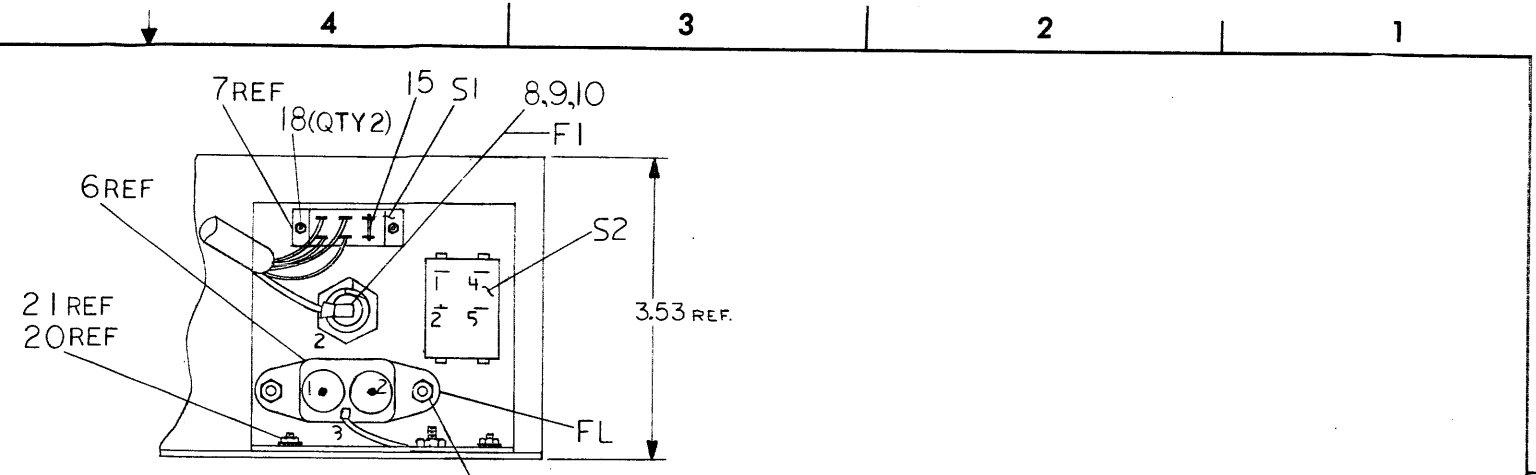
ITEM NO.	DRAWING NO.	PART NO.	DESCRIPTION	7016753-0	7016753-01											REF DESIGNATION
1	C-MD-7422173-0-0	7422173-0	BRACKET, MOUNTING	4	-											
2		9008190-00	BUMPER, RUBBER	4	4											
3		9006071-01	SCREW, PAN HD PHL #10-32 x .38	4	4											
4		9006635	WASHER, LOCK, INT TOOTH #10	4	4											
5		3616450-00	LABEL, CONFIGURATION	1	-											
6	A-PS-9905129-0-0	9905129-20	BAG, PLASTIC	1	1											
7	C-MD-7423311-0-0	7423311	BRACKET, MTG.	-	4											

E.C.O. NO.	MLO01															
------------	-------	--	--	--	--	--	--	--	--	--	--	--	--	--	--	--

"THIS DRAWING AND SPECIFICATIONS, HEREIN, ARE THE PROPERTY OF DIGITAL EQUIPMENT CORPORATION AND SHALL NOT BE REPRODUCED OR COPIED OR USED IN WHOLE OR IN PART AS THE BASIS FOR THE MANUFACTURE OR SALE OF ITEMS WITHOUT WRITTEN PERMISSION. COPYRIGHT © 1979 DIGITAL EQUIPMENT CORPORATION"			TITLE INSTALLATION ASSY		ASSY NO.		SIZE B		CODE PL		NUMBER 7016753-0-0		REV. A	
					SHEET 1 OF 1		INSERTION PARTS LIST DATA BASE REV							

THIS DRAWING AND SPECIFICATIONS, HEREIN, ARE THE PROPERTY OF DIGITAL EQUIPMENT CORPORATION AND SHALL NOT BE REPRODUCED OR COPIED OR USED IN WHOLE OR IN PART AS THE BASIS FOR THE MANUFACTURE OR SALE OF ITEMS WITHOUT WRITTEN PERMISSION.
 COPYRIGHT © 1980
 DIGITAL EQUIPMENT CORPORATION

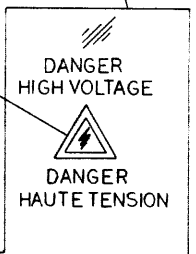
WIRE TABLE						
ITEM NO	DESCRIPTION	FROM	TO	REMARKS		
1	18 BLUE	TI-7	PI-6	3&2 9.37 LG		
1	18 BLUE	TI-8	PI-4	3&2 9.37 LG		
1	18 BLU/BLK	TI-9	PI-3	3&2 10.00 LG		
1	18 BLU/BLK	TI-10	PI-1	3&2 10.00 LG		
26	GRN/YEL	FLI-3	SOLDER GRN	4&14 3.0 LG		
27	BROWN	FLI-1	SOLDER S2-4	30 4.25 LG		
1	RED	TI-1	FI-2	SOLDER 6.5 LG		
1	RED	TI-2	SI-2A	SOLDER 4.5 LG		
1	RED/YEL	TI-3	SI-1	5.5 LG		
1	BLACK	TI-4	SI-2	4.5 LG		
1	WHITE	TI-5	SI-1A	SOLDER 4.0 LG		
1	WHITE	TI-6	S2-2	30 7.0 LG		
15		SI-1B	SOLDER SI-2B	SOLDER .5 LG		
27	BRN	S2-5	30 FI-1	SOLDER 3.0 LG		
29	18 WHT	S2-1	30 FLI-2	SOLDER 3.0 LG		



VIEW A-A
SCALE 1:1

VIEW C-C
SCALE 1:1

VIEW B-B
SCALE 1:1



CAUTION: OFF SHEET PARTS LIST EXISTS
SEE B-PL-7017372-0-0

DATE	REVISION HISTORY	REV.	INITIALS
			A

DESCRIPTION	DRAWING NO.	PART NO.	ITEM NO.
UNLESS OTHERWISE SPECIFIED DIMENSIONS ARE IN INCHES FIRST USED ON TU58-EX AND THE FOLLOWING TOLERANCES APPLY (PER DEC STD 114)			
INCHES TOLERANCES	ANGLES ±0°30'	APPLICABLE DIMENSION RANGE (CHECK ONE)	DIMENSION RANGE IN INCHES
			OVER TO OVER TO OVER TO OVER TO
±.1	±.005	<input type="checkbox"/> ±.004 <input type="checkbox"/> ±.008 <input type="checkbox"/> ±.012 <input type="checkbox"/> ±.016 <input type="checkbox"/> ±.024 <input type="checkbox"/> ±.04	
THIRD ANGLE PROJECTION	DATE	TITLE	
DO NOT SCALE DRAWING	SEP-13-79	POWER SUPPLY ASSY	
REMOVE BURRS AND BREAK SHARP CORNERS	DATE	DOCUMENT NUMBER	
MATERIAL	7 JAN 80	DAD7017372-0-0 A	
SEE PART LIST	DATE	SCALE 1/1 SHEET 1 OF 1	
FINISH	3-26-80	E-UA-TU58-EX-0	

DRAWING NUMBER DAD7017372-0-0-A

**DIGITAL EQUIPMENT CORPORATION
MAYNARD MASSACHUSETTS**

PACKAGING INSTRUCTION

TITLE PKG PROCESSOR SB11 TU58, TU58L, TUS58

REV: A DATE: 3/80
B 11/80

LEGEND		
VARIATION	USED ON	REMARKS
37-00490-00	SB11-AA SB11-DA SB11-EA SB11-FA	N/A
37-00490-01	TU58-EA TU58-VA TU58L-FA	N/A
37-00490-02	TUS-58-FA	N/A

QUANTITY DWG/PART NUMBER DESCRIPTION

QUANTITY	DWG/PART NUMBER	DESCRIPTION
2	99-06547-00	PAD, MOLDED FOAM
1	99-06546-00	CARTON, REGULAR SLOTTED
5 FT.	99-05729-00	TAPE, CARTON SEALING
4 FT.	99-06200-00	BUBBLEWRAP, ANTISTATIC, PINK
1	99-06663-00	FOLDER, ONE PIECE

PACKAGING INSTRUCTIONS 37-00490-00 (FIGURE 1)

STEP PROCEDURE

1. FOLLOW GENERAL GUIDELINES (A-SP-37-00349-0-0). FOR CONSTRUCTION OF FOAM PADS USE MOLD BOX(99-06547-00) AND MOLD INSERT (99-06547-00).
2. PLACE ONE FOAM PAD (99-06547) ON EACH END OF THE SB11.
3. SET UP THE REGULAR SLOTTED CARTON (99-06546-00) AND SEAL BOTTOM USING ONE STRIP (21 INCHES) OF CARTON SEALING TAPE. (99-05729-00).
4. SLIDE SB11 (WITH END CAPS) INTO THE REGULAR SLOTTED CARTON (99-06546-00).
5. WRAP POWER CABLE (BC20N-05) IN BUBBLE WRAP (9906200), AND PLACE IT ON TOP OF SB11 UNIT (SEE FIGURE 1).
6. PLACE INSTALLATION ASSY(70-16753), H315 LOOP BACK CONNECTOR, AND BN11A-04 23 CONDUCTOR CABLE INTO ONE PIECE FOLDER(9906663-00) AND SEAL USING A 14 INCH STRIP OF CARTON SEALING TAPE.
7. PLACE THE ONE PIECE FOLDER CONTAINING THE SPARE PARTS INTO THE REGULAR SLOTTED CARTON AS SHOWN IN FIGURE 1.
8. CLOSE TOP FLAPS AND SEAL USING 21 INCHES OF CARTON SEALING TAPE (99-05729-00).
9. PALLETIZE AS PER FIGURE 4 ONTO PALLET (9906199) USING FOUR(4) ANGLE BOARD (99-06185-14) AND FOUR(4) STRAPPING(99-05734-02), OR STRETCHWRAP POLYVINYL CHLORIDE FILM (9906553-06).

ENG M. CHACKO 3/19/80 APPD W. B. ROBERTS 3/20/80

SIZE CODE NUMBER 3700490-0-0

SHEET 1 OF 7

PACKAGING INSTRUCTION

TITLE PKG PROCESSOR SB11, TUS58, TU58L, TUS 58

REV: A DATE: 3/80
B 11/80

QUANTITY DWG/PART NUMBER DESCRIPTION

QUANTITY	DWG/PART NUMBER	DESCRIPTION
2	99-06547-00	Pad, Molded Foam
1	99-06546-00	Carton, Regular Slotted
3 ft.	99-06200-00	Bubblewrap, Antistatic
3.5 ft.	99-05729-00	Tape, Carton Sealing

PACKAGING INSTRUCTIONS (3700490-01)

STEP PROCEDURE (Figure 2)

1. Follow General Guidelines (A-SP-3700349-0-0) for construction of foam pads, using Mold Box and Mold Insert (9906547-00).
2. Set up the Regular Slotted Carton (9906546-00) and seal bottom using one strip (21 inches) of Carton Sealing Tape (9905729-00).
3. Place one Foam Pad (9906547-00) on each end of the TUS58.
4. Slide TUS58 with end caps in position half way inside Regular Slotted Carton (9906546-00).
5. Now take the Power Cable, wrap it in Bubble Wrap (990600-00), and place it over TUS58 Unit. (See Figure 2).
6. Slide the TUS58 Unit with end caps completely into Regular Slotted Carton (9906546-00).
7. Close the top flaps and seal using 21 inches of Carton Sealing Tape (9905729-00).
8. Palletize as per Figure 4 using four (4) Angle Board (9906185-14) and four (4) Strapping (9905734-02).

PACKAGING INSTRUCTIONS (3700490-02)

STEP PROCEDURE

1. Follow General Guidelines (A-SP-3700349-0-0) for construction of foam pads, using Mold Box and Mold Insert (9906547-00).
2. Set up the Regular Slotted Carton (9906546-00) and seal bottom using one strip (21 inches) of Carton Sealing Tape (9905729-00).
3. Place one Foam Pad (9906547-00) on each end of the TUS58.
4. Slide TUS58 with end caps in position half way inside Regular Slotted Carton (9906546-00).
5. Now take the Power Cable, wrap it in Bubble Wrap (990600-00), and place it over TUS58 Unit. (See Figure 2).
6. Slide the TUS58 Unit with end caps completely into Regular Slotted Carton (9906546-00).
7. Close the top flaps and seal using 21 inches of Carton Sealing Tape (9905729-00).
8. Palletize as per Figure 4 using four (4) Angle Board (9906185-14) and four (4) Strapping (9905734-02).

DEC9-1031

SIZE CODE NUMBER 3700490-0-0

SHEET 2 OF 7

PACKAGING INSTRUCTION

TITLE PKG PROCESSOR SB11, TUS58, TU58L, TUS58

REV: A DATE: 3/80
B 11/80

QUANTITY DWG/PART NUMBER DESCRIPTION

QUANTITY	DWG/PART NUMBER	DESCRIPTION
2	99-06547-00	Pad, Molded Foam
1	99-06546-00	Carton, Regular Slotted
1	99-06663-00	Folder, One Piece
4 ft.	99-06200-00	Bubblewrap, Antistatic, Pink
4-1/2 ft.	99-05729-00	Tape, Carton Sealing

PACKAGING INSTRUCTIONS (3700490-02)

STEP PROCEDURE

1. Follow General Guidelines (A-SP-3700349-0-0) for construction of foam pads. Use Mold Box (9906547-00) and Mold Insert (9906547-00).
2. Set up the Regular Slotted Carton (9906546-00) and seal the bottom using one strip (21 inches) of Carton Sealing Tape (9905729-00).
3. Place one Molded Foam Pad (9906547-00) on the end of the TUS58-FA and place in the Regular Slotted Carton so that the foam goes to the bottom of the Regular Slotted Carton. See Figure 3.
4. Wrap separately in one (1) foot pieces of Bubblewrap (9906200-00): One (1) Leim TUS58, LA120 Hanger (7423304-00) and one (1) Leim TUS58 Clamp (7423303-00). In a two (2) foot piece of Bubblewrap, wrap a Leim Cable Assy (7017352-00).
5. Arrange the wrapped parts from step 4 along with two (2) Cartridge Tapes (TUS58K) and a Hardware Bag containing three (3) Pan Head Screws 10-32 x .52LG (9008508-01), three (3) Lock Washer No. 10 (9007906-00) and three (3) No. 10 Flat Washer (9006664-00) into the One Piece Foler (9906663-00) and seal using a 14 inch strip of Carton Sealing Tape.
6. Place the One Piece Folder containing the additional parts into the Regular Slotted Carton as shown in Figure 3.
7. Place the remaining Molded Foam Pad over the TUS58-FA and close the Regular Slotted Carton and seal using one (1) 21 inch strip of Carton Sealing Tape.
8. Palletize as per Figure 4 using four (4) Angle Board (9906185-14) and four (4) Strapping (9905734-02).

PACKAGING INSTRUCTIONS (3700490-02)

STEP PROCEDURE

1. Follow General Guidelines (A-SP-3700349-0-0) for construction of foam pads. Use Mold Box (9906547-00) and Mold Insert (9906547-00).
2. Set up the Regular Slotted Carton (9906546-00) and seal the bottom using one strip (21 inches) of Carton Sealing Tape (9905729-00).
3. Place one Molded Foam Pad (9906547-00) on the end of the TUS58-FA and place in the Regular Slotted Carton so that the foam goes to the bottom of the Regular Slotted Carton. See Figure 3.
4. Wrap separately in one (1) foot pieces of Bubblewrap (9906200-00): One (1) Leim TUS58, LA120 Hanger (7423304-00) and one (1) Leim TUS58 Clamp (7423303-00). In a two (2) foot piece of Bubblewrap, wrap a Leim Cable Assy (7017352-00).
5. Arrange the wrapped parts from step 4 along with two (2) Cartridge Tapes (TUS58K) and a Hardware Bag containing three (3) Pan Head Screws 10-32 x .52LG (9008508-01), three (3) Lock Washer No. 10 (9007906-00) and three (3) No. 10 Flat Washer (9006664-00) into the One Piece Foler (9906663-00) and seal using a 14 inch strip of Carton Sealing Tape.
6. Place the One Piece Folder containing the additional parts into the Regular Slotted Carton as shown in Figure 3.
7. Place the remaining Molded Foam Pad over the TUS58-FA and close the Regular Slotted Carton and seal using one (1) 21 inch strip of Carton Sealing Tape.
8. Palletize as per Figure 4 using four (4) Angle Board (9906185-14) and four (4) Strapping (9905734-02).

DEC9-1031

SIZE CODE NUMBER 3700490-0-0

SHEET 3 OF 7

This drawing and specifications, herein, are the property of Digital Equipment Corporation and shall not be reproduced or copied or used in whole or in part as the basis for the manufacture or sale of items without written permission.

PACKAGING INSTRUCTION

REV: A DATE: 3/80
 B 11/80

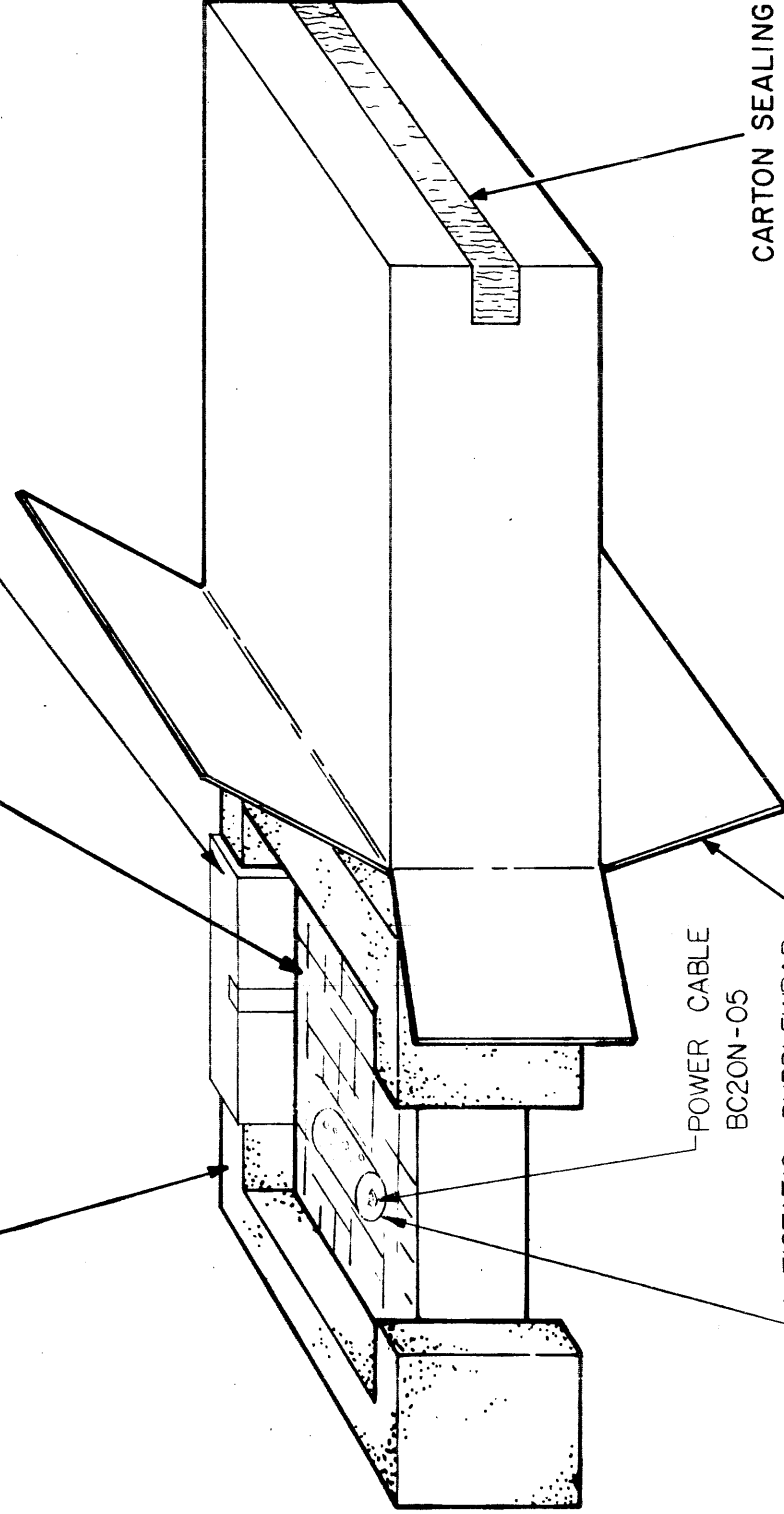
TITLE

PKG PROCESSOR SB11, TU58L, TUS58

MOLDED FOAM PAD
 9906547-00 (2 PIECES)

SB11 PROCESSOR

ONE PIECE FOLDER (9906663-00)
 (CONTAINS SPARE PARTS)



CARTON SEALING TAPE
 9905729-00

REGULAR SLOTTED CARTON
 9906546-00

FIGURE 1.
 3700490-00

PACKAGED DIMENSIONS & WEIGHTS			
	USA	METRIC	
WEIGHT	13 lb.	5.9	KILO
LENGTH	18 in.	457.2	mm.
WIDTH	10 in.	255.6	mm.
HEIGHT	20 in.	504.8	mm.
CUBE	2.1 cu. ft.	.06	cu. m
DENSITY	6.3 lb/cu. ft	100.3	Kg/cu. m

NOTE: Make changes on "C" size original only and rephotograph

ENG.	APPD.	DATE	SIZE	CODE	NUMBER	REV
	<i>M.B. Roberts</i>	10/2/79	C	SP	3700490-0-0	B

This drawing and specifications, herein, are the property of Digital Equipment Corporation and shall not be reproduced or copied or used in whole or in part as the basis for the manufacture or sale of items without written permission.

PACKAGING INSTRUCTION

TITLE
PKG PROCESSOR SB11, TU58L, TUS58

REV: A DATE: 3/80
B 11/80

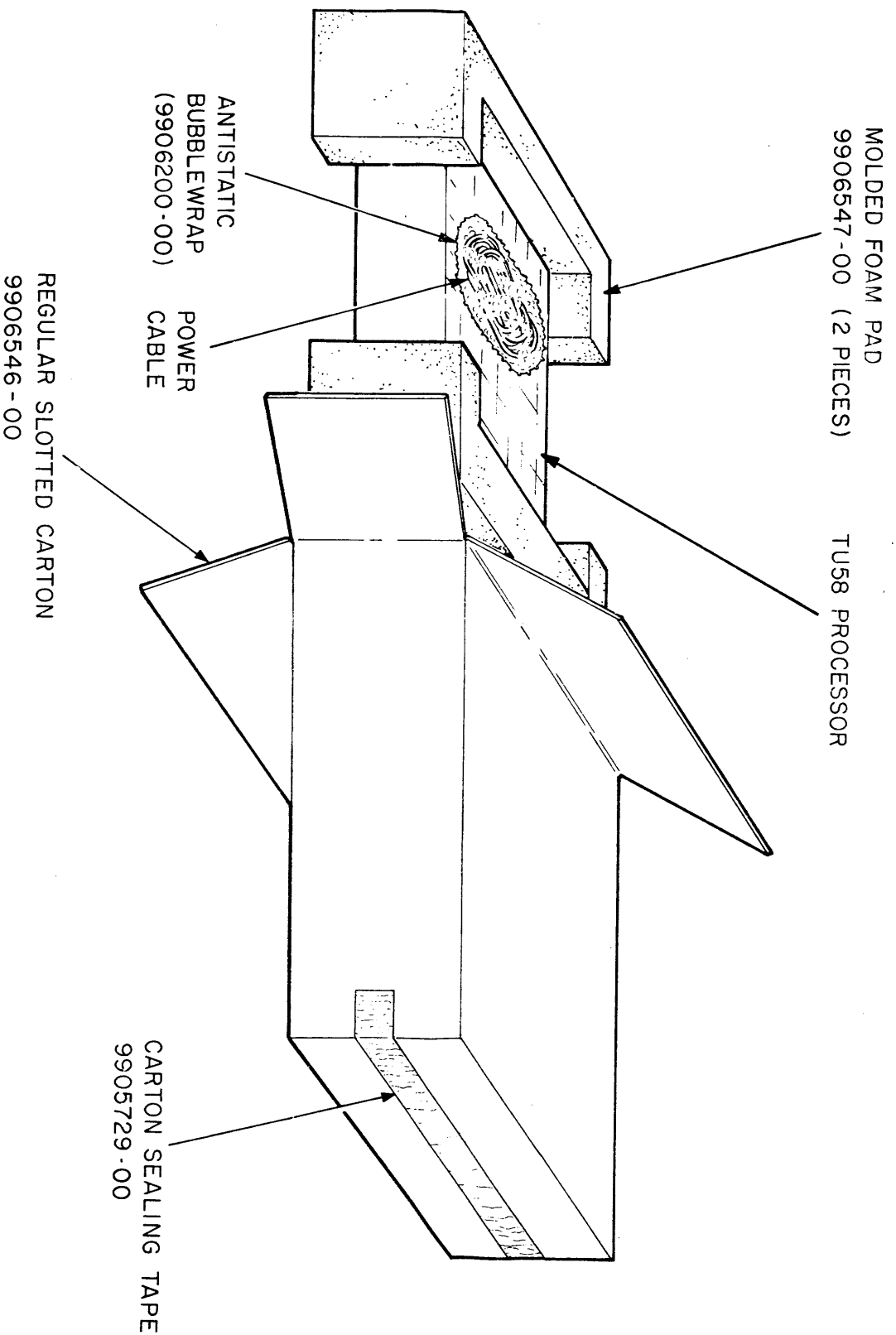


FIGURE 2
3700490-01

NOTE: Make changes on "C" size original only and rephotograph

PACKAGED DIMENSIONS & WEIGHTS	
USA	METRIC
WEIGHT 13 lb.	5.9 KILO
LENGTH 18 in.	457.2 mm.
WIDTH 10 in.	255.6 mm.
HEIGHT 20 in.	504.8 mm.
CUBE 2.1 cu. ft.	.06 cu. m
DENSITY 6.3 lb/cu. ft.	100.3 kg/cu. m

ENG. <i>[Signature]</i>	APPD. <i>[Signature]</i>	DATE 10/2/79	SIZE C	CODE SP	NUMBER 3700490-0-0	REV B
-------------------------	--------------------------	--------------	--------	---------	--------------------	-------

PACKAGING INSTRUCTION

TITLE PKG PROCESSOR SB11, TUS58, TUS58

REV: A _____ **DATE:** 3/80

B _____ 11/80

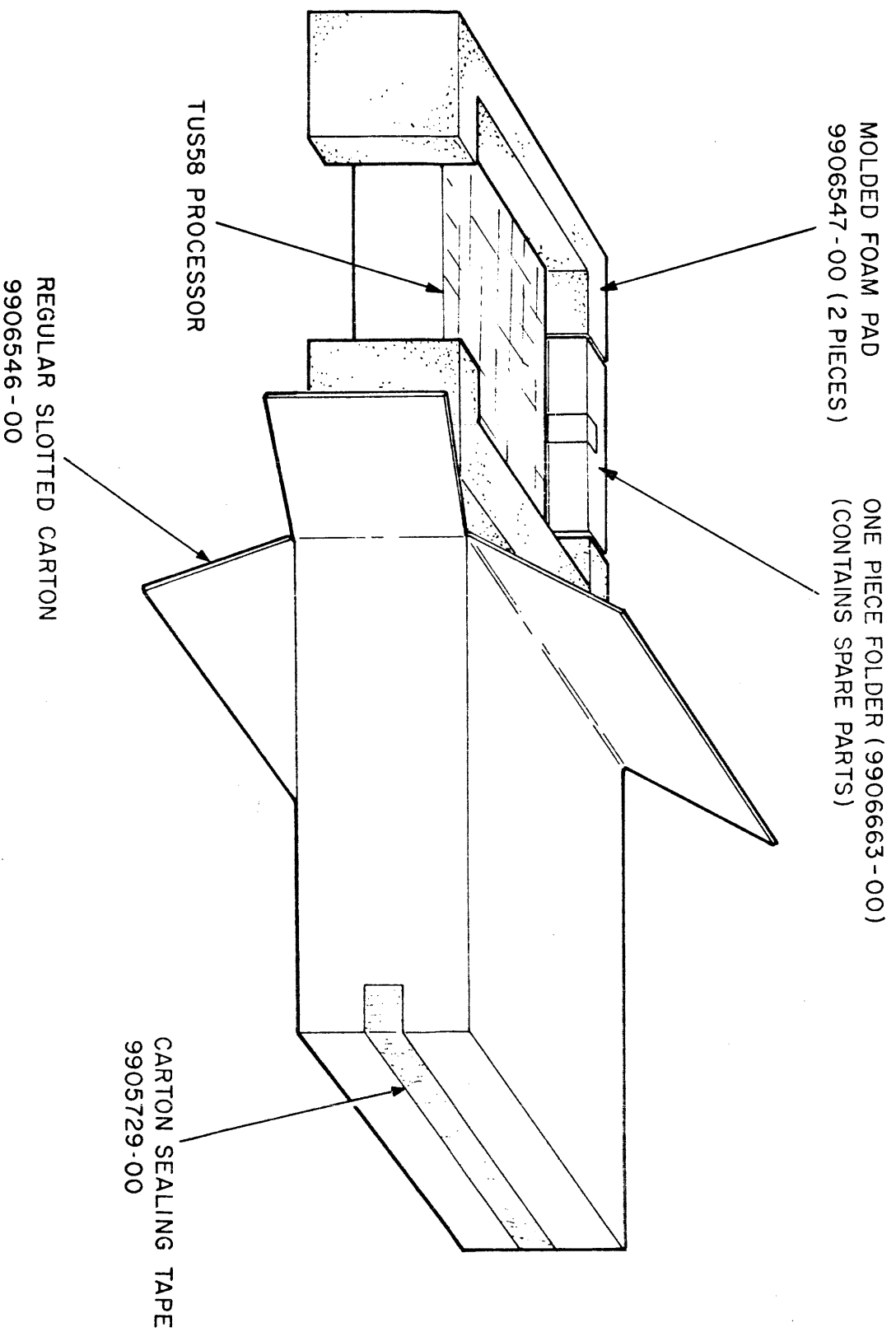


FIGURE 3
3700490-02

NOTE: Make changes on "C" size original only and rephotograph

PACKAGED DIMENSIONS & WEIGHTS	
USA	METRIC
WEIGHT 15.5 lb.	7.0 KILO
LENGTH 18 in.	457.2 mm.
WIDTH 10 in.	255.6 mm.
HEIGHT 20 in.	504.8 mm.
CUBE 2.1 cu. ft.	.06 cu. m
DENSITY 6.3 lb/cu. ft.	100.3 Kg/cu. m

ENG.	APPD.	DATE	SIZE	CODE	NUMBER	REV
	<i>A/B R. D. LOR</i>	<i>10/3/79</i>	C	SP	3700490-0-0	B

This drawing and specifications, herein, are the property of Digital Equipment Corporation and shall not be reproduced or copied or used in whole or in part as the basis for the manufacture or sale of items without written permission.

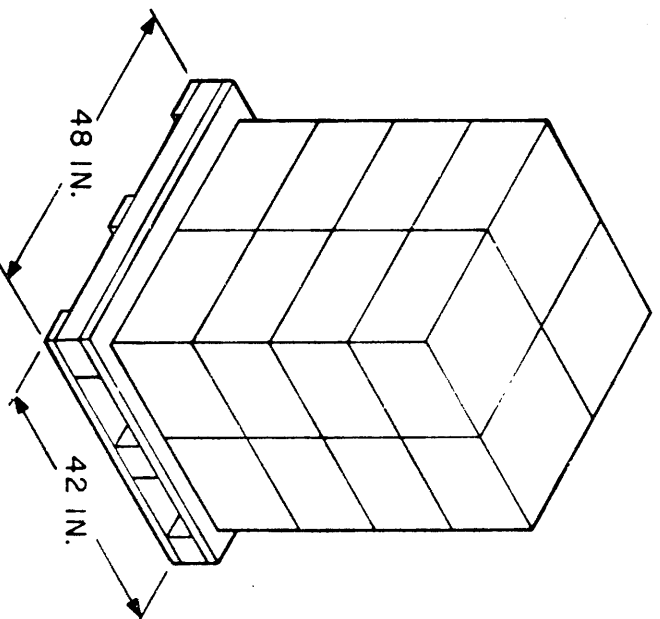
PACKAGING INSTRUCTION

TITLE PKG PROCESSOR SB11, TU58, TU58L, TUS58

REV: A _____ **DATE:** 3/80

B _____ 11/80

4 CARTON PER TIER
 4 TIERS HIGH
 16 CARTONS PER PALLET



LOAD DETAIL

FIGURE 4

3700490-00
 3700490-01
 3700490-02

NOTE: Make changes on "C" size original only and rephotograph

ENG. M.L.	APPD. H.S. Rennie	DATE 12/80	SIZE C	CODE SP	NUMBER 3700490-0-0	REV B
---------------------	-----------------------------	----------------------	------------------	-------------------	------------------------------	-----------------

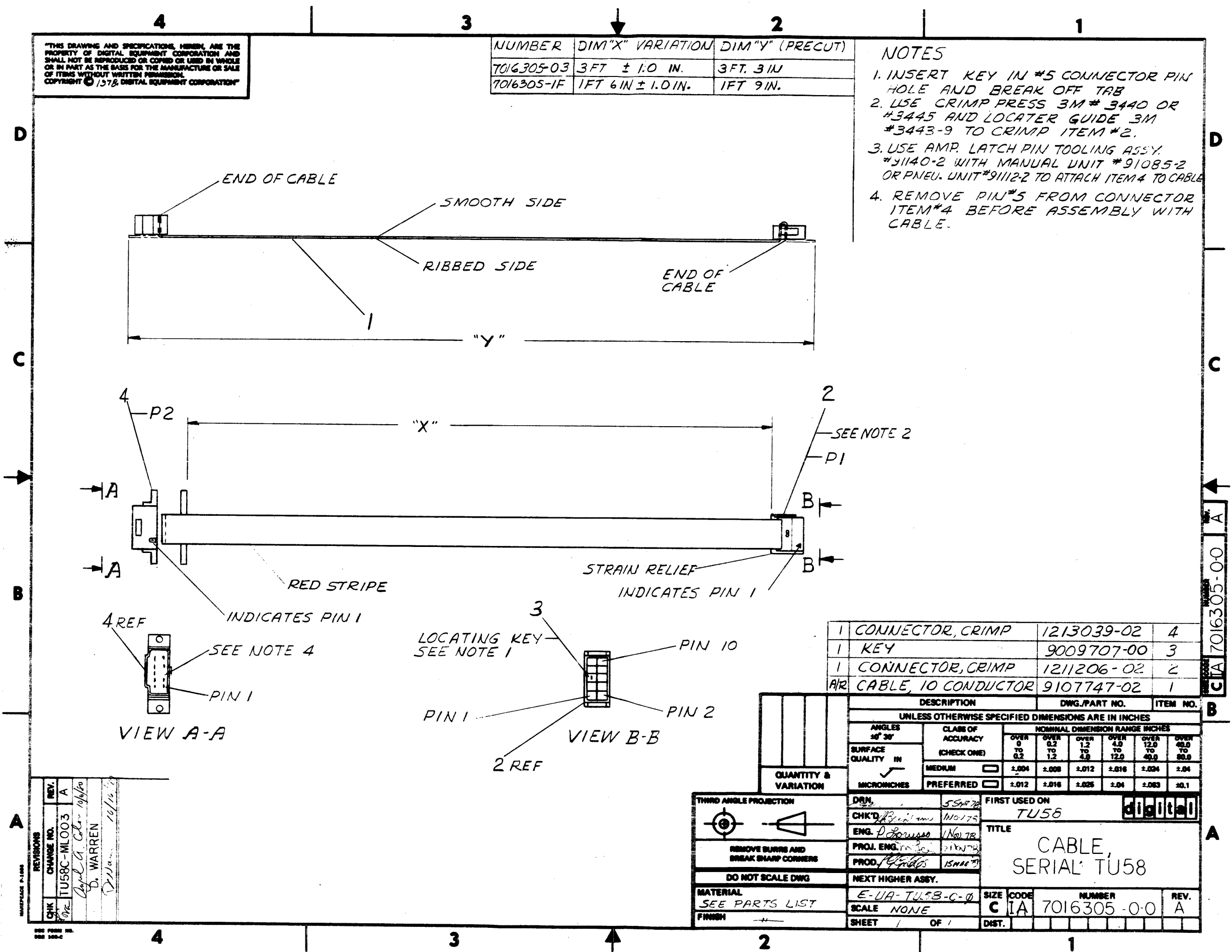
PACKAGED DIMENSIONS & WEIGHTS	
USA	METRIC
WEIGHT 258 lb.	117.03 KILO
LENGTH 48 in.	1219 mm.
WIDTH 42 in.	1067 mm.
HEIGHT 44 in.	1118 mm.
CUBE 51.3 cu. ft.	1.45 cu. m
DENSITY 5.03 lb/cu. ft.	80.58 kg/cu. m

"THIS DRAWING AND SPECIFICATIONS, HEREIN, ARE THE PROPERTY OF DIGITAL EQUIPMENT CORPORATION AND SHALL NOT BE REPRODUCED OR COPIED OR USED IN WHOLE OR IN PART AS THE BASIS FOR THE MANUFACTURE OR SALE OF ITEMS WITHOUT WRITTEN PERMISSION. COPYRIGHT © 1978, DIGITAL EQUIPMENT CORPORATION"

NUMBER	DIM "X" VARIATION	DIM "Y" (PRECUT)
7016305-03	3 FT ± 1.0 IN.	3 FT. 3 IN.
7016305-1F	1 FT 6 IN ± 1.0 IN.	1 FT 9 IN.

NOTES

1. INSERT KEY IN #5 CONNECTOR PIN HOLE AND BREAK OFF TAB
2. USE CRIMP PRESS 3M # 3440 OR #3445 AND LOCATER GUIDE 3M #3443-9 TO CRIMP ITEM #2.
3. USE AMP. LATCH PIN TOOLING ASSY. #91140-2 WITH MANUAL UNIT #91085-2 OR PNEU. UNIT #91112-2 TO ATTACH ITEM #4 TO CABLE.
4. REMOVE PIN #5 FROM CONNECTOR ITEM #4 BEFORE ASSEMBLY WITH CABLE.



DESCRIPTION	DWG./PART NO.	ITEM NO.
1 CONNECTOR, CRIMP	1213039-02	4
1 KEY	9009707-00	3
1 CONNECTOR, CRIMP	1211206-02	2
1/2 CABLE, 10 CONDUCTOR	9107747-02	1

UNLESS OTHERWISE SPECIFIED DIMENSIONS ARE IN INCHES							
ANGLES 30° 30'	CLASS OF ACCURACY (CHECK ONE)	NOMINAL DIMENSION RANGE INCHES					
		OVER 0 TO 0.2	OVER 0.2 TO 1.2	OVER 1.2 TO 4.0	OVER 4.0 TO 12.0	OVER 12.0 TO 48.0	
SURFACE QUALITY IN MICRONS	MEDIUM <input type="checkbox"/>	±.004	±.008	±.012	±.016	±.024	±.04
	PREFERRED <input type="checkbox"/>	±.012	±.016	±.025	±.04	±.063	±.1

THIRD ANGLE PROJECTION	DRAWN	5 SEP 78	FIRST USED ON	TU58
REMOVE BURRS AND BREAK SHARP CORNERS	CHK'D	11/01/78	TITLE	CABLE, SERIAL: TU58
DO NOT SCALE DWG	ENG. P. [Signature]	11/01/78	SIZE	CODE
MATERIAL	PROJ. ENG. [Signature]	11/01/78	NUMBER	7016305-0-0
SEE PARTS LIST	PROD. [Signature]	11/01/78	REV.	A
FINISH	NEXT HIGHER ASSY.		DIST.	

REV.	CHANGE NO.	DATE	BY
A	TU58C-M1003	10/16/78	D. WARREN

USE FORM NO. 100 100-C

C/A 7016305-00

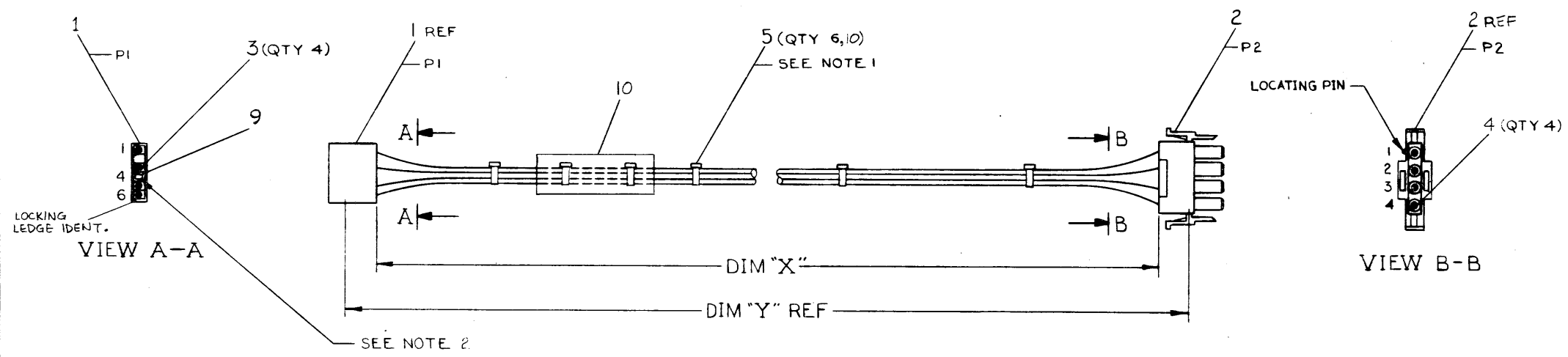
0-0-225910Z 2

THIS DRAWING AND INFORMATION HEREON ARE THE PROPERTY OF THE UNITED STATES GOVERNMENT AND ARE NOT TO BE REPRODUCED OR TRANSMITTED IN ANY FORM OR BY ANY MEANS, ELECTRONIC OR MECHANICAL, INCLUDING PHOTOCOPYING, RECORDING, OR BY ANY INFORMATION STORAGE AND RETRIEVAL SYSTEM, WITHOUT PERMISSION IN WRITING FROM THE UNITED STATES GOVERNMENT. © 1978. DIGITAL EQUIPMENT CORPORATION.

WIRE TABLE							
ITEM NO	DESCRIPTION	FROM	TO	REMARKS			
	AWG	COLOR	CONN WITH	CONN WITH			
6	18	BLU	PI-1 1 & 3	P2-1 2 & 4	+12V		
7	18	BLK	PI-3 1 & 3	P2-2 2 & 4			
7	18	BLK	PI-6 1 & 3	P2-3 2 & 4			
8	18	RED	PI-5 1 & 3	P2-4 2 & 4	+5V		

LEGEND		
NUMBER	DIM "X" VARIATION	DIM "Y" (PRE-CUT) REF
7016527-02	2 FT - ± 1.0 IN	2 FT - 5 IN
7016527-01	1 FT - ± 1.0 IN	1 FT - 5 IN
7016527-1F	1 FT 6 IN ± 1.0 IN	1 FT - 11 IN

NOTES:
 1. ATTACH CABLE TIE (ITEM 5) APPROXIMATELY EVERY 3" AS SHOWN.
 2. INSERT KEY PLUG (ITEM 9) INTO POSITION 4 FROM THIS END.



CAUTION OFF SHEETS PARTS LIST EXIST B-PL-7016527-0-0

REV.	DATE	BY	CHKD
1	10/17/78	C. BICKOFF	
2	10/17/78	JIM WALES	
3	10/17/78	D. WARREN	

DESCRIPTION	QTY	UNIT	ITEM NO.
CABLE, TU58 SUPPLY OUTPUT <td>1</td> <td>EA</td> <td>7016527-0-0</td>	1	EA	7016527-0-0

CLASS OF ACCURACY	CLASS OF ACCURACY	CLASS OF ACCURACY	CLASS OF ACCURACY	CLASS OF ACCURACY	CLASS OF ACCURACY
1	2	3	4	5	6

QUANTITY & VARIATION	DESCRIPTION	QTY	UNIT	ITEM NO.
1	CABLE, TU58 SUPPLY OUTPUT	1	EA	7016527-0-0

DATE	BY	CHKD	PROJ. ENG.	PROD. DES.	FIRST USED ON	TITLE
10/17/78	C. BICKOFF	JIM WALES	D. WARREN		TU58	CABLE, TU58 SUPPLY OUTPUT

MATERIAL	SCALE	SIZE	CODE	NUMBER	REV.
SEE PARTS LIST	1/1	D	IA	7016527-0-0	C

"THE MATERIAL HEREIN IS FOR INFORMATION PURPOSES ONLY AND IS SUBJECT TO CHANGE WITHOUT NOTICE. DIGITAL EQUIPMENT CORPORATION ASSUMES NO RESPONSIBILITY FOR ANY ERRORS WHICH MAY APPEAR HEREIN."

DRAWING DIRECTORY

"THIS DRAWING AND SPECIFICATIONS, HEREIN, ARE THE PROPERTY OF DIGITAL EQUIPMENT CORPORATION AND SHALL NOT BE REPRODUCED OR COPIED OR USED IN WHOLE OR IN PART AS THE BASIS FOR THE MANUFACTURE OR SALE OF ITEMS WITHOUT WRITTEN PERMISSION. COPYRIGHT © 1980 DIGITAL EQUIPMENT CORPORATION."

UNIT VARIATIONS

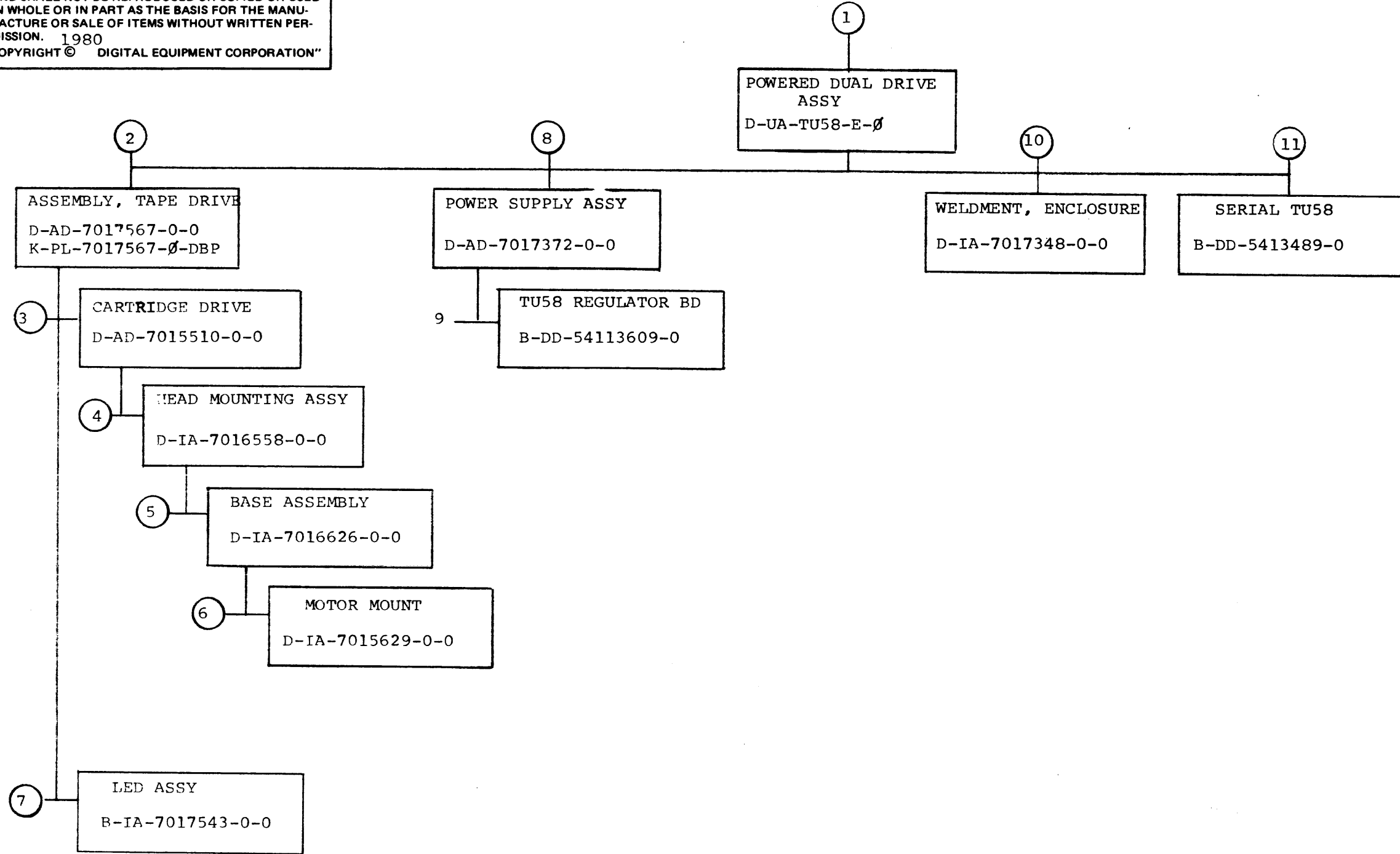
VAR	TITLE
TU58-EX	POWERED DUAL DRIVE ASSY

REVISIONS	CHANGE NO.	REV.
	INITIALS	
CHK	TU58E-MLOO1	A B
	<i>[Signature]</i>	

USED ON OPTION/MODEL	DRN. <i>James Sicond</i>	DATE 21 JAN 80	TITLE		
	TU58-EA	CHK'D <i>[Signature]</i>	DATE 16 MAR 80	POWERED DUAL DRIVE ASSY	
	PROJ. ENG. <i>[Signature]</i>	DATE 26 MAR 80	SIZE	CODE	NUMBER
	PROD <i>[Signature]</i>	DATE 26 MAR 80	B	DD	TU58-E
SHEET 1 OF 4					REV 3
			DIST.		



"THIS DRAWING AND SPECIFICATIONS, HEREIN, ARE THE PROPERTY OF DIGITAL EQUIPMENT CORPORATION AND SHALL NOT BE REPRODUCED OR COPIED OR USED IN WHOLE OR IN PART AS THE BASIS FOR THE MANUFACTURE OR SALE OF ITEMS WITHOUT WRITTEN PERMISSION. 1980 COPYRIGHT © DIGITAL EQUIPMENT CORPORATION"



TITLE POWERED DUAL DRIVE ASSY	SHEET 2 OF 4	SIZE CODE B DD	NUMBER TU58-E	REV B
----------------------------------	--------------	-------------------	------------------	----------

digital

PARTS LIST

QUANTITY / VARIATION

NOTES:

- 1) Item 8 & 12 to be shipped inside Item 9
- 2) Item 16 (Variation Tag) is loose piece and is to be installed on unit adjacent to Serial tag.

DRN. DATE *21-JAN-80* DES. ENG. DATE *QWdl 3/26/80* MFG. ENG. DATE *Johita Bate*
 CHK'D. DATE *J. Walls 3/26/80* RESP. ENG. DATE *Johita Bate 3-26-80* NEXT HIGHER DOC.

ITEM NO.	DRAWING NO.	PART NO.	DESCRIPTION	QUANTITY / VARIATION											REFERENCE DESIGNATORS		
				TU58-EA	TU58-EB	TU58-EC	TU58-ED										
1	E-UA-TU58-E-Ø	TU58-EX	POWERED DUAL DRIVE ASSY	1	1	-	-										
2		1700083-09	POWER CORD 115V, 6 AMP	-	-	1	1										
3	A-SP-3700490-0-0	3700490-01	PACKAGING INSTRUCTIONS (TU58)	-	-	1	1										
4	B-PL-7016753-0-0	7016753-00	INSTALLATION ASSY (KIT)	-	-	1	1										
5		3615809-00	MEDIA CARTRIDGE, TU58-K	-	-	-	2										
6		MPØ1Ø14	FIELD MAINT. PRINT SET (TU58-E)	-	-	1	1										
7		1700090-00	POWER CORD 270V, 6 AMP	-	-	-	1										
8		23765A9-00	BOOT CHIP	-	-	-	1										
9		9906228-00	SHIPPING BOX, ROM CHIP SET	-	-	-	1										
10		BC2ØY-25	I/O CABLE	-	-	-	1										
11		BC2ØZ-25	I/O CABLE	-	-	-	1										
12		9007207-00	FUSE, 220V, .38A SLOW BLOW	-	-	-	1										
13	E-K-ØTU58-UG-001	EK-ØTU58-UG	USERS GUIDE	-	-	1	1										
14	B-PL-TU58-E-2	TU58-EC	ACCESSORY KIT	1	-	-	-										
15	B-PL-TU58-E-2	TU58-ED	ACCESSORY KIT	-	1	-	-										
16	A-PS-3615946-0-0	3615946-0-0	VARIATION TAG	-	-	1	1										

ECO NO. MI.001

"THIS DRAWING AND SPECIFICATIONS, HEREIN, ARE THE PROPERTY OF DIGITAL EQUIPMENT CORPORATION AND SHALL NOT BE REPRODUCED OR COPIED OR USED IN WHOLE OR IN PART AS THE BASIS FOR THE MANUFACTURE OR SALE OF ITEMS WITHOUT WRITTEN PERMISSION. COPYRIGHT © 1980 DIGITAL EQUIPMENT CORPORATION"

TITLE TU58-E SHIP LIST

ASSY. NO. TU58-EX

SECTION 1 OF 1

SIZE B CODE PL NUMBER TU58-E-2 REV. B

SHEET OF

digital**PARTS LIST**

QUANTITY / VARIATION

NOTES:

DRN. <i>Patro</i> DATE <i>SEP-12-79</i>	DES. ENG. <i>A. Galtke</i> DATE <i>7 JAN 1980</i>	MFG. ENG. <i>John LaBate</i> <i>3-26-80</i>
CHK'D. <i>A. Galtke</i> DATE <i>7 JAN 1980</i>	RESP. ENG. <i>J. Wall</i> DATE <i>7 JAN 1980</i>	NEXT HIGHER DOC.

ITEM NO.	DRAWING NO.	PART NO.	DESCRIPTION	QUANTITY	VARIATION	REFERENCE DESIGNATORS
1		1616062-00	TRANSFORMER, POWER	1		
2		1212170-00	CONTACT FEMALE (SOCKET)	4		
3		1212167-06	CONNECTOR, PLUG, 6 PIN	1		
4		9007930-00	RING TERMINAL RED #10	1		
5	C-MD-7423655-0-0	7423655-00	SHIELD, PROTECTIVE	1		
6		1215905-00	POWER RECEPTACLE AND LINE FILTER	1		
7		1216901-00	DPDT SWITCH (115-230V)	1		
8		1216391-	FUSE HOLDER (20A-300V)	1		
9		1211237-00	FUSE, .750A, 250V, SLO BLOW	1		
10		9107305-02	TUBING, SHRINK (RED)	A/R		
11	D-UA-5413609-0-0	5413609-00	REGULATOR BOARD	1		
12	D-IA-7423654-0-0	7423654-00	BRACKET, POWER SUPPLY	1		
13		9006664-00	WASHER, FLAT #10	1		
14		9006565-00	NUT, KEP #10-32	1		
15		9107560-03	WIRE, BUSS #18 AWG	A/R		
16		9006022-02	SCREW, FLAT, HD, PHL, #6-32 x 3/8	3		
17		9006022-01	SCREW, PAN HD, PHL, 6-32 x 3/8	2		
18		9009280-00	NUT, HEX #4-40	2		
19		9007649-00	WASHER, LOCK EXTERNAL TOOTH #6	2		
20		9006659-00	WASHER, FLAT, #6	2		

ECO NO. INIT. A

"THIS DRAWING AND SPECIFICATIONS, HEREIN, ARE THE PROPERTY OF DIGITAL EQUIPMENT CORPORATION AND SHALL NOT BE REPRODUCED OR COPIED OR USED IN WHOLE OR IN PART AS THE BASIS FOR THE MANUFACTURE OR SALE OF ITEMS WITHOUT WRITTEN PERMISSION. COPYRIGHT © 1980 DIGITAL EQUIPMENT CORPORATION"	TITLE	ASSY. NO.	SIZE	CODE	NUMBER	REV.
	POWER SUPPLY ASSY	D-AD-7017372-0-0	B	PL	7017372-0-0	A

SECTION 1 OF 1	SHEET 1 OF 2
----------------	--------------

digital PARTS LIST

QUANTITY / VARIATION

NOTES:

DRN. DATE <i>14 SEP 79</i>	DES. ENG. DATE <i>7 JAN 80</i>	MFG. ENG. DATE <i>26 MAR 1980</i>
CHK'D. DATE <i>7 JAN 80</i>	RESP. ENG. DATE <i>7 JAN 80</i>	NEXT HIGHER DOC.

ITEM NO.	DRAWING NO.	PART NO.	DESCRIPTION	QUANTITY	UNIT	REMARKS	REFERENCE DESIGNATORS
21		9006560-00	NUT, KEP 6-32	4			
22		3616053-00	DECAL, HIGH VOLTAGE	1			
23		9007031-00	TIE, CABLE	2			
24		3615998-00	NEUTRAL, STICKER	1			
25		3612680-01	GROUND STICKER	1			
26		9107410-54	WIRE, STRD., #18 AWG, GRN/YEL	A/R			
27		9107360-11	WIRE, STRD., #18 AWG BROWN	A/R			
28		1216552-00	SWITCH, 250 VAC	1			
29		9107360-99	WIRE, STRD #18 AWG WHITE	A/R			
30		9007970-00	TERM, QUICK CONN RED 22-18 AWG	4			
31		9008268-00	THERMAL COMPOUND	A/R			
32		9006666-00	WASHER, FLAT #8	4			
33		9006563-00	NUT, KEP #8-32	4			

ECO NO.

<small>"THIS DRAWING AND SPECIFICATIONS, HEREIN, ARE THE PROPERTY OF DIGITAL EQUIPMENT CORPORATION AND SHALL NOT BE REPRODUCED OR COPIED OR USED IN WHOLE OR IN PART AS THE BASIS FOR THE MANUFACTURE OR SALE OF ITEMS WITHOUT WRITTEN PERMISSION. COPYRIGHT © 1980 DIGITAL EQUIPMENT CORPORATION"</small>	TITLE	ASSY. NO.	SIZE	CODE	NUMBER	REV.
	POWER SUPPLY ASSY	D-AD-7017372-0-0	B	PL	7017372-0-0	A
SECTION 1 OF 1			SHEET 2 OF 2			